

# Cabinet Member for Children and Families

## Agenda

---

**Date:** Wednesday, 27th April, 2016  
**Time:** 2.30 pm  
**Venue:** Committee Suite 2/3 - Westfields, Middlewich Road, Sandbach, CW11 1HZ

---

1. **Apologies for Absence**

2. **Declarations of Interest**

To provide an opportunity for Members and Officers to declare any disclosable pecuniary and non-pecuniary interests in any item on the agenda.

3. **Public Speaking Time/Open Session**

In accordance with Procedure Rules Nos.11 and 35 a period of 10 minutes is allocated for members of the public to address the meeting on any matter relevant to the work of the body in question. Individual members of the public may speak for up to 5 minutes but the Chairman or person presiding will decide how the period of time allocated for public speaking will be apportioned where there are a number of speakers. Members of the public are not required to give notice to use this facility. However, as a matter of courtesy, a period of 24 hours' notice is encouraged.

Members of the public wishing to ask a question at the meeting should provide at least three clear working days' notice in writing and should include the question with that notice. This will enable an informed answer to be given.

4. **Proposed School Expansions Crewe (Pages 1 - 70)**

To consider proposals for the expansion of Monks Coppenhall Community Primary School, Hungerford Primary Academy and the Wistaston Academy Trust.

---

For requests for further information

Contact: Cherry Foreman

Tel: 01270 686463

E-Mail: [cherry.foreman@cheshireeast.gov.uk](mailto:cherry.foreman@cheshireeast.gov.uk) with any apologies

**This page is intentionally left blank**

## PORTFOLIO HOLDER REPORT

---

Date of Meeting: 27 April 2016

Report of: Kath O'Dwyer, Executive Director- Children's Services/Deputy CEO

Subject/Title: Proposed School Expansions - Crewe

Portfolio Holder: Cllr Liz Durham, Children and Families

---

### 1. Report Summary

- 1.1. As the Strategic Commissioner of School Places, Cheshire East Council has a statutory duty to ensure a sufficiency of school places for children resident in its area. An analysis of the latest pupil forecasts identified the need to provide additional primary school places in Crewe in response to increasing pupil populations. The data produced indicates the need for an extra 420 school places (reception to year 6) which, if agreed, would provide 60 more reception class places in this area.
- 1.2. This decision paper seeks Portfolio Holder permission to support the proposals made by the governing bodies/academy trusts to expand their schools from 420 to 630 places for implementation in 2017 in response to this Local Authority identified forecast shortfall.
- 1.3. This paper explains the rationale for the proposed change and reports on the feedback received during consultation, which took place between 25 February and 25 March.

### 2 Recommendation

2.1 That approval is given to:

- Support the proposal made by the Monks Coppenhall Community Primary School Governing Body to expand the school from 420 places (2FE) to 630 (3FE) places providing an additional 210 pupil places to commence during the academic year 2017-2018
- Support the proposal made by Hungerford Primary Academy to expand the school from 420 places (2FE) to 630 (3FE) places providing an additional 210 pupil places to commence during the academic year 2017-2018
- To inform the Wistaston Academy Trust that their proposal to expand the school from 420 places (2FE) to 630 (3FE) places cannot be supported on this occasion and the reasons for this.

### 3 Reasons For Recommendations

- 3.1 This recommendation is made on the basis of the outcomes of the consultation exercise (**Appendix 1**), which includes Hungerford Primary Academy and Wistaston Academy pupil feedback (**Appendix 1.1**) and Monks Coppenhall pupil feedback as **Appendix 1.2**, together with a review of the latest data, which has included the October 2015 based interim pupil forecasts, the location of schools with forecast spare capacity and new housing development in the area as set out in **Appendix 2**. Consideration has been given to particular concerns, namely the impact of expansion

on the future viability of schools with vacancies and the proximity of Crewe schools to planned housing development.

- 3.2 This analysis has informed this recommendation, which is that the solution to the forecast need for Crewe must be met by expansion of the two schools located in the north of the town – Monks Coppenhall Community Primary School and Hungerford Primary Academy. This would ensure that there is sufficient capacity to mitigate the impact of approved new housing development in this area of the town and allowing schools with vacancies forecast over the planning period to meet the demand for school places in the south of the town.
- 3.3 Meetings were held between 29 and 31 March with the headteachers and representatives of governors of the three schools to provide an overview of the responses from the consultation and next steps. The data produced in relation to the latest new housing development pupil yields was shared. For two of the three schools, guidance issued by the Department for Education in relation to the expansion of an existing academy was also shared to facilitate discussion about the requirements for making changes to funding agreements.

## Consultation Feedback Summary

- 3.4 Consultation has been undertaken as a partnership arrangement between the Local Authority and the governing bodies/academy trusts of Hungerford Primary Academy, Monks Coppenhall Primary and Wistaston Academy. The consultation document (**Appendix 3**) has been published on the Local Authority's website with governing bodies/academy trusts invited to link to this on the schools' own websites. Consultees are listed in **Appendix 4**.
- 3.5 A total of 183 respondents participated in the consultation exercise.

Respondents	Number
Local Councillor	3
Local resident/other	28
Neighbouring school	50
Governor Hungerford	3
Governor St Mary's	2
Governor Wistaston	2
Staff member Hungerford	11
Staff member Wistaston	26
Parent Hungerford	4
Parent St Mary's	4
Parent Wistaston	50
<b>Total</b>	<b>183</b>

- 3.6 In addition, all three schools were encouraged to invite feedback from their pupils. The approach taken varied from school to school. Pupils attending Wistaston Academy and Hungerford Primary Academy submitted their feedback using the online form provided by the Local Authority. Monks Coppenhall Community Primary undertook consultation with each class and submitted a collective response to show pupils thoughts on the proposal.

- 3.7 All feedback received (**Appendix 1**) has been considered by the Local Authority to inform its decision-making process. Respondents were provided with the opportunity to comment on one or more of the school expansion proposals. Some respondents have commented on only one proposal whereas others have commented on two or all three of the proposals. The responses for each school are shown below.

**Hungerford Primary Academy.**

- 3.8 Of the 183 responses received 78% commented on the Academy Trust proposal to expand the school from 420 to 630 pupil places with 68% (rounded) of the 142 comments either supporting the proposal or having no view one way or another. This is shown in the table below.

Responses	Hungerford Academy	
Support	43	30%
No View	53	37%
Sub total - Support and No View	96	68%
Do not support	46	32%
<b>Total</b>	<b>142</b>	

- 3.9 The feedback in support of expansion includes comment about the suitability of the school site having 'room for expansion' and maintaining a 'good outside area', opportunities for inclusive practice and alternative provision, a good school ethos and good quality education providing value for money and an efficient and effective use of public funds. Pupil feedback has been low (15 responses) but all feedback is positive, demonstrating support for the proposal. Comments received point to opportunities for improving resources, more teachers and support staff, and more friends, and the benefit to children who otherwise may not have a school place.
- 3.10 Whilst the majority of respondents acknowledged that there is a need for growth in Crewe, 32% objected to this proposal expressing concern about the potential impact on nearby schools where spare places already exist, commenting that a school expansion nearby has the potential to impact on the viability of such schools and must therefore be taken into account. Suggestions were made that consideration should be given to the proximity of schools to new housing developments where the need for places is expected to increase. Comments were also received about the impact on car parking and traffic congestion at drop off and pick up times.

**Monks Coppenhall Primary.**

- 3.11 Of the 183 responses received 71% commented on the Governing Body proposal to expand the school from 420 to 630 pupil places with 65% (rounded) of the 130 comments supporting the proposal or having no view one way or another.

Responses	Monks Coppenhall	
Support	29	22%
No View	56	43%
Sub total - Support and No View	85	65%
Do not support	45	35%
<b>Total</b>	<b>130</b>	

- 3.12 The feedback in support of expansion includes comment about Monks Coppenhall being an excellent school that engages with its community, with good staff and teaching. Pupils were asked to consider the proposal to expand and feedback was collated at class level and this has been positive with more children thinking it is a good idea and that they are 'excited about the prospect'. Comments received point to opportunities for improving resources, more teachers and more children to play with and who will bring good ideas. The concerns raised by pupils were about whether a bigger school might mean more noise, less outdoor space and lunch time challenges.
- 3.13 Whilst the majority of respondents acknowledged that there is a need for growth in Crewe, 35% objected to this proposal. The general concerns raised were the same as for all three proposals about the potential impact of expansion on other schools in Crewe where spare places already exist. Suggestions were made that consideration should be given to the proximity of schools to new housing developments where the need for places is expected to increase. Comments were also received about the impact on car parking and traffic congestion at drop off and pick up times.

**Wistaston Academy**

- 3.14 Of the 183 responses received, 93% commented on the Academy Trust proposal to expand the school from 420 to 630 pupil places with 65% (rounded) of the 171 comments supporting the proposal or having no view one way or another.

Responses	Wistaston Academy	
Support	99	58%
No View	13	8%
Sub total - Support and No View	112	65%
Do not support	59	35%
<b>Total</b>	<b>171</b>	

- 3.15 The feedback in support of expansion includes comment about the suitability of the 'good quality' school site, that this is an outstanding school, that this would 'benefit the community and children'. Pupil feedback was low and no particular comment was made but confirmed support for the expansion.

- 3.16 Whilst the majority of respondents acknowledged that there is a need for growth in Crewe, 35% objected to this proposal expressing concern about the impact on school standards, the potential impact on nearby schools where spare places already exist (commenting that a school expansion nearby has the potential to impact on the viability of such schools and must therefore be taken into account), and that consideration should be given to the proximity of schools to new housing developments where the need for places is expected to increase. Comments were also received about the impact on car parking and traffic congestion at drop off and pick up times.

## Conclusion

- 3.17 The responses received from the 183 consultees included objections, the number of which varies for each proposal. In support of the objection, comment was made inviting the Local Authority to consider concerns in relation to new housing, proximity to existing schools and future viability of schools with vacancies, and parking and highways issues. Recommendation was also made that consideration should be given to the establishment of a new school. This feedback has been fully considered and a summary of the outcome of this investigation is set out below.

## Objection 1 – Future Viability of Schools with Vacancies

- 3.18 The feedback received shows that the majority of the concerns raised about the proximity of schools with vacancies to the three expansion proposals relate to the proposal to expand Wistaston Academy, with 36 objections on this basis, compared with 21 for Monks Coppenhall Community Primary and 21 for Hungerford Primary Academy.
- 3.19 The latest forecasts, as set out in the table below, show the schools in Crewe that are forecast to have spare capacity based on existing patterns of parental preference. The schools are shown by locality, which illustrates that the majority of the spare capacity by 2020 is forecast to be towards the south of Crewe with 87% (193/222) being in this area. A map is attached as **Appendix 5** to illustrate the location of the schools.

## Pupil Forecasts – Spare Capacity

Primary School	Locality	Net Cap	2016	2017	2018	2019	2020
Edleston	Crewe South	210	4	8	10	13	15
Gainsborough	Crewe South	420	7	15	21	24	25
St Mary's Catholic	Crewe South	630	43	62	85	107	110
Vine Tree	Crewe South	210	4	6	9	11	13
Wistaston Academy	Crewe South	420	20	13	14	16	13
Wistaston Church Lane	Crewe South	420	3	7	11	14	17
Brierley	Crewe North	210	3	1	3	5	5
St Michael's	Crewe North	420	23	17	20	23	24
<b>Total</b>		<b>2,940</b>	<b>107</b>	<b>129</b>	<b>173</b>	<b>213</b>	<b>222</b>

Source: October 2015 Based Interim Pupil Forecasts

- 3.20 On the basis of this assessment, the preferred proposals would be those submitted by Hungerford Primary Academy and Monks Coppenhall Community Primary.
- 3.21 By comparison, the schools which are forecast to be oversubscribed based on current patterns of parental preference are all located within the north of Crewe, as shown below. On the basis of the latest pupil forecasts, there are no schools in this locality with spare capacity.

**Pupil Forecasts - Oversubscribed Schools**

Primary School	Locality	Net Cap	2016	2017	2018	2019	2020
Beechwood	Crewe North	315	-33	-42	-46	-46	-53
Hungerford Academy	Crewe North	420	7	1	-1	-6	-10
Leighton Academy	Crewe North	420	-65	-76	-85	-98	-115
Mablins Lane	Crewe North	525	-6	-24	-19	-24	-30
Monks Coppenhall	Crewe North	420	-6	-39	-59	-73	-87
Underwood West	Crewe North	432	-16	-28	-36	-47	-58
<b>Total</b>		<b>2532</b>	<b>-119</b>	<b>-208</b>	<b>-246</b>	<b>-294</b>	<b>-353</b>

Source: October 2015 Based Interim Pupil Forecasts

- 3.22 On the basis of this assessment, the preferred proposals would, once again, be those submitted by Hungerford Primary Academy and Monks Coppenhall Community Primary.

**Objection 2 - Housing Development – Proximity**

- 3.23 The feedback received shows that the other main concerns were related to the proximity of schools to planned new housing development. The majority of responses expressing this concern relate to the proposal for Wisaston Academy, with 36 objections on this basis, compared with 21 for Monks Coppenhall Community Primary and 21 for Hungerford Primary Academy.
- 3.24 A map showing the location of new housing development is attached as **Appendix 6**. By collating all of the new housing developments considered in this process; and ranking these by their estimated pupil yields and school catchment areas, this also indicates that the majority (81%) of need due to new housing is located within the north of the town, as shown in the table below.



**Housing Development - Proximity**

Catchment School	Locality	Sum of Pupil Yields
Monks Coppenhall	Crewe North	183
Hungerford Academy	Crewe North	93
Mablins Lane/Leighton	Crewe North	65
Underwood West	Crewe North	21
Beechwood	Crewe North	12
St Michael's Academy	Crewe North	5
Brierley	Crewe North	3
Mablins Lane	Crewe North	3
<b>Crewe North Total</b>		<b>385</b>
Edleston Primary	Crewe South	8
Wistaston Church Lane	Crewe South	56
Wistaston Academy	Crewe South	27
<b>Crewe South Total</b>		<b>91</b>
<b>Overall Total</b>		<b>476</b>

- 3.25 On the basis of this assessment, the preferred proposals would be those submitted by Hungerford Primary Academy and Monks Coppenhall Community Primary.

**Objection 3 – Parking and Traffic Congestion**

- 3.26 Feedback on parking and traffic was low with 9 objections to the Wisaston Academy proposal, 5 objections to the Monks Coppenhall proposal and 4 objections to the Hungerford proposal.
- 3.27 It is accepted that an increase in a school's capacity is likely to result in an increase in traffic and parking in the vicinity of the school. As part of the school organisation process, schools that are supported to expand will be asked to review their travel to school plans to ensure that any viable mitigation is made. In addition, the Local Authority's planning process will consider any highways and car parking related issues when considered planning applications to expand a school's accommodation.
- 3.28 On this basis, the Local Authority is satisfied that full and careful consideration will be given to this concern as part of its decision-making process.

**New School Recommendation**

- 3.29 Feedback also recommended that consideration should be given to the establishment of a new school/Academy. During the early stages of considering viable options, which included the establishment of a new school, an assessment of available land concluded that suitable land holdings were unavailable in the area, which included consideration of the former Lodgefields Primary School site, and that this meant that this option would not be viable for 2017. However, this suggestion can inform discussions on any future need in Crewe.

#### **4 Wards Affected and Local Ward Members**

Crewe Central -	Cllr Irene Faseyi
Crewe East -	Cllr Suzanne Brookfield
Crewe East -	Cllr Clair Chapman
Crewe East -	Cllr David Newton
Crewe North -	Cllr Mo Grant
Crewe South -	Cllr Dorothy Flude
Crewe South -	Cllr Steven Hogben
Crewe St Barnabas -	Cllr Damian Bailey
Crewe West -	Cllr Jill Rhodes
Crewe West -	Cllr Brian Roberts
Leighton -	Cllr Derek Bebbington
Haslington -	Cllr John Hammond
Haslington -	Cllr David Marren
Shavington -	Cllr Steven Edgar
Willaston & Rope -	Cllr Sarah Pochin
Wistaston -	Cllr Margaret Simon
Wistaston -	Cllr Jacqueline Weatherill

#### **5 Policy Implications**

- 5.1 The Local Authority has a statutory duty to provide sufficient places for its residents. Providing additional places in Crewe will ensure that the Authority meets its statutory duty and satisfies parental preference by providing places within their local community and near to their home address.
- 5.2 The number of pupils admitted to a publicly funded school is based on the admission authority's admission arrangements, which includes the published admission number (PAN) and are determined annually. Where an admission authority needs to change its PAN, there is no duty to consult on this if the intention is to increase it. In the event that the proposals are implemented, the relevant admission authorities will need to make a change to their admission arrangements in line with the statutory timescales set out in the School Admissions Code (2014).

#### **6 Financial Implications**

- 6.1 The proposed expansion of the two schools to increase each school's capacity by 210 pupil places (1form of entry) is being funded through Basic Need Capital Grant funding and Section 106 developer contributions. . Section 106 contributions have been negotiated for 89 of the additional pupil places.
- 6.2 Desktop analysis has been carried out to identify budget figures for the proposals. If given the approval to proceed then full feasibility studies will be commissioned to identify more accurately the costs of implementation and this detail will be included within the outline business case, which will be submitted for consideration and approval through the Council's internal financial approval process.
- 6.3 All Capital projects greater than £250,000 are subject to Cheshire East Council's Project Gateway process, which seeks endorsement by way of review and challenge. The need for change in Crewe has already started to proceed through this process.

- 6.4 In accordance with the Cheshire East Council's Constitution - Finance and Contract Procedure Rules, financial approval of this scheme will be sought at Cabinet as a fully funded supplementary capital estimate.

### **7 Legal Implications**

- 7.1 Under section 14 of the Education Act 1996, every local authority has a statutory duty to provide sufficient school places for all pupils in its area. The Department for Education (DfE) has a strong expectation, especially in areas of basic need, that all 'good' and 'outstanding' academies should consider how they can best support their LA in meeting this duty. To help achieve this, academies can propose either an expansion of their school premises, increase their PAN or admit over PAN.
- 7.2 The DfE statutory guidance accompanies the School Organisation (Prescribed Alterations to Maintained Schools) (England) Regulations 2013 and (Establishment and Discontinuance of Schools) Regulations 2013 that came into force on 28 January 2014. It provides information on the processes involved in making significant changes to maintained schools (e.g. expansion), establishing new provision and school closure.
- 7.3 School Organisation regulations support the government's aim of increasing school autonomy and reducing bureaucracy. They allow schools to have more control when making decisions about their size and composition and therefore enable them to be more responsive to the needs of parents and local communities.
- 7.4 As a consequence of the changes introduced by the 2013 Regulations, governing bodies of all categories of mainstream school can propose the expansion (enlargement) of their school premises without following a formal statutory process. There is, nevertheless, a strong expectation on schools and local authorities to consult with interested parties in developing their proposals prior to publication as part of their duty under public law to act rationally and take into account all relevant considerations. The manner in which consultation is carried out is not prescribed in regulations and it is therefore for the proposer to determine.
- 7.5 The Local Authority cannot propose the expansion of an academy and would therefore need the full support of the academy trust, which itself is required to undertake consultation with the Local Authority, parents, faith sponsors (where relevant) and other schools. Under the terms of their funding agreement, academy trusts are required to seek approval from the Secretary of State or Regional Schools Commissioner (RSC) if they plan to change the provision of their academy and must be able to demonstrate that,
- adequate local consultation has taken place;
  - funding has been secured in relation to the proposed change, and financial arrangements are sound;
  - the change is aligned with local authority place planning; and
  - appropriate planning permissions and other consents required have been secured.

- 7.6 The department expects that only academies that are rated as 'good' or 'outstanding' will seek to expand their premises, in order to increase their intake. Only in very limited circumstances will the RSC consider approval of a proposal to expand from a school in another category, for example:
- where the academy is in an area of critical basic need;
  - all other options for providing additional places have been fully explored; and
  - the academy has a robust improvement plan in place.
- 7.7 Academies rated 'good' or 'outstanding' at their last inspection, proposing to physically expand their school premises, may follow the fast track process, unless the proposal:
- results in an increase of over 50% in the school's capacity; and/or
  - increases pupil numbers to 2,000 pupils or more.

## 8 Risk Management

- 8.1 Failure to commission additional Crewe primary school capacity would mean that demand for school places will exceed supply leaving some children without a place at a school within a reasonable distance, reducing opportunities for parental choice and challenges through the in year admissions process.
- 8.2 Under the terms of their funding agreement, academy trusts are required to seek approval from the Secretary of State or Regional Schools Commissioner if they plan to change the provision of the academy. Proposals for expansions must be submitted to the department through one of two processes, the 'fast track' application or 'full business case'. An assessment of the proposal will be made before the Regional Schools Commissioner (RSC) or Secretary of State, as appropriate, makes a final decision. In the event that 'fast track' approval is not received, the Local Authority will need to review its position to ensure its sufficiency duty is met.
- 8.3 Before seeking approval the academy trust must be able to show that funding has been secured in relation to the proposed change and that financial arrangements are sound. In the event that the proposals do not receive Local Authority support, the proposers will not have the financial means to implement their expansions and the Local Authority will be unable to meet its sufficiency duty in this area. In the event that financial approval is not received, the Local Authority will need to review its position to ensure its sufficiency duty is met.
- 8.4 It is intended that the new primary school places will be in place for September 2017 to meet the anticipated shortfall in capacity. There is a risk that a September implementation will not be deliverable as proposals of this size would normally require 18-20 months. Risks to implementation include securing planning permission and Section 77 (School Standards and Framework Act 1998) playing field approval.
- 8.5 The Department for Education basic need capital allocations are made to local authorities to support the capital requirement for providing new pupil places by expanding existing maintained schools, free schools or academies, and by establishing new schools. This therefore necessitates that all types of publicly funded schools are considered in the school organisation process.

## 9 Background and Options

- 9.1 The background to this process is set out in the consultation document (**Appendix 3**) and supporting documentation (**Appendix 2**). The process that has been implemented so far is shown in the table below.

Date	Actions
Jan 2015	Interim forecasts based on October 2014 School Census data.
16/03/2015	Data presented to School Organisation Strategy Group (SOSG)
01/04/2015	Data presented to Crewe Headteachers Partnership meeting
21/05/2015	Crewe School sites assessment and final pupil forecasts including new housing at 15 April 2015 presented to SOSG
12/06/2015	Forecasts including Crewe as a priority area were shared with East Cheshire Association of Primary Headteachers (ECaph)
15/09/2015	SOSG received an update on the options appraisal.
19/11/2015	Forecasts including Crewe as a priority area were shared with Cheshire East Association of Secondary Headteachers
Dec 2015	Meetings with the headteachers and representatives of the governing body for the 3 schools
21/01/2016	Crewe Members Briefings – options for change
02/02/2016	Crewe Members Briefings – options for change
02/02/2016	Informal Cabinet informed of consultation process
24/02/2016	Meetings with Crewe and Shavington Primary and Secondary Headteachers.
25/02/2016 - 25/03/2016	Consultation period
29/03/2016- 31/03/2016	Meetings with headteachers and governor representative of Hungerford Academy. Monks Coppenhall and Wistaston Academy.
27 April 2016	Portfolio Holder considers outcome of Consultation
5 Days	Call-in Period
Sept - Dec 2017	Proposed Implementation

## 10 Access to Information/Bibliography

- [School Organisation \(Prescribed Alterations to Maintained Schools\) \(England\) Regulations 2013](#)
- [Making significant changes to an existing academy](#)
- [School Admissions Code \(2014\)](#)

## 11 Contact Information

Contact details for this report are as follows:

**Name:** Barbara Dale

**Designation:** School Admissions and Organisation Manager

**Tel No:** 01270 686392     **E-mail:** Barbara.dale@cheshireeast.gov.uk

**This page is intentionally left blank**

	Do you support the proposed expansion?			
CONNECTION	Hungerford Academy	monks coppenhall	Wistaston Academy	Comments
local councillor	Yes	Yes	No View	As both a Cheshire East Councillor and Town Councillor for this area i.e. Crewe East I am very familiar with both schools. In my opinion both schools are excellent and engage with the community. Staff and teaching are again very good however if both schools are to be expanded we need to see something done about traffic congestion and parent parking. Both schools have their existing problems with parking issues and these cannot be ignored and solutions have to be provided particularly as the schools may be growing in the future not least due to the increased housing developments in their areas.
local councillor	Yes	Yes	Yes	-
Staff member wistaston	N/A	N/A	Yes	Lots of good quality land that will accomadate the children. Good road access.
Staff member wistaston	N/A	N/A	Yes	Will benefit the whole community.
Staff member wistaston	No	No	Yes	This is an outstanding school
staff member wistaston	N/A	N/A	Yes	-
staff member wistaston	N/A	N/A	Yes	-
staff member wistaston	N/A	N/A	Yes	-
staff member wistaston	N/A	N/A	Yes	-
staff member wistaston	N/A	N/A	Yes	-
staff member wistaston	N/A	N/A	Yes	-
staff member wistaston	N/A	N/A	yes	
staff member wistaston	N/A	N/A	yes	
Staff member wistaston	No View	No View	Yes	-
staff member wistaston	N/A	N/A	Yes	The site offers an excellent opportunity for the building of an additional structure to house 210 more pupils and the school is outstanding. Recently, the Academy has been granted MAT and sponsorship status.
staff member wistaston	No View	No View	Yes	-
Staff member wistaston	No View	No View	yes	
Staff member wistaston	No View	No View	Yes	
Staff member wistaston	No View	No View	Yes	
Staff member wistaston	No View	No View	Yes	
Staff member wistaston	No View	No View	Yes	
Staff member wistaston	No View	No View	Yes	
Staff member wistaston	No View	No View	Yes	
Staff member wistaston	No View	No View	Yes	

Staff member wistaston	No View	No View	Yes	
staff member hungerford	Yes	No	Yes	Hungerford Academy has room for expansion within the grounds whilst still maintaining a good outside area for the school.
staff member hungerford	Yes	No View	No View	It's a great idea, hungerford have plenty of land and space to go upwards and outwards. .
staff member hungerford	Yes	No View	No View	-
staff member hungerford	Yes	N/A	N/A	Hungerford meets all the criteria for all the needs different children need in school.
staff member hungerford	Yes	N/A	N/A	Hungerford has recently submitted an expression of interest to open a free school on our premises. We are uniquely qualified to run a free school based on our already successful model set by The Crescent (see below). The expansion being discussed would support our ability to work in partnership with the LA to provide a continuum between mainstream education, alternative provision and resourced provision at the Hungerford site. This would consolidate the expertise and support that Hungerford already provides for The Crescent, and allowing the free school to be anchored to a mainstream school would increase a sense of belonging for families and children attending. - - Additional unique benefits of the alternative provision being part of the Hungerford Primary Academy site: - • The provision would benefit greatly by Hungerford's proposed expansion taking place as the building for the AP could be incorporated into the building of the new classes. - • It will act revolving door where children are never on roll with the AP. - • Children attend the AP with a teaching assistant from their home school or in certain cases, the receiving school. This helps the TA to build strong mutual relationships between the child and the TA. It also upskills the TA in preparation for their return to their mainstream school. The skills can be shared with the other teaching assistants in their school. - • We will follow the procedures set by The Crescent, as this now has a proven track record. - • We offer strong focus on positive behaviour, while always acknowledging any negative behaviour and discussing these behaviour types with the children. - • The children will access parts of the mainstream education at Hungerford Primary Academy once they are closer to a full-time return to education. - • The children will share equipment with the mainstream school, such as sharing the climbing wall, PE equipment, etc. - • Outdoor education will play a vital role in the rehabilitation of the children with a focus on resilience and increasing self-belief and self-worth. Hungerford holds a bronze LOTC Mark (Learning Outside the Classroom) and is currently having a purpose-built Outdoor education building constructed. - • It will be an ethical alternative to the traditional pupil referral unit. - - Possible expansion would allow up to plan for the inclusion of an alternative provision to our already successful model. -



staff member hungerford	Yes	N/A	N/A	<p>As the headteacher of a great school, it is my privilege to respond to this consultation positively.</p> <p>- We are an inclusive school. I am passionate, and lead my staff likewise to include vulnerable children wherever possible. It is because I believe that the life chances of children are affected positively and negatively by school experience. It is my commitment to make a positive difference. This means that we are a different school. I think many headteachers espouse this ethos however we behave in a way that's is congruent with our beliefs. We include children - offering them a place to belong. Our children feel a part of this ethos - I saw this from their consultation responses. We don't need more spaces in schools in Crewe who do not include all. Yes I have high expectations of the children here, and they are challenged and supported to achieve but I won't compromise on inclusion in order to seek higher headline data. - Last year our level 4 and above data in year 6 was 93% writing (with 98% making 2 levels progress and above, 90% in maths (88% 2 levels progress) and 92% in reading( 91% making 2 levels progress), with attainment in all 3 being above the national average. we do not disaggregate the Resource provision from our results because we don't need to. They do well here. Our children, acknowledged by Ofsted, begin their school career at Hungerford just below the average. We could extend these opportunities to more children. - - Our agenda for school improvement and improvement of education in its widest sense is I believe what we have a good reputation for. We innovate for inclusion, opening an Alternative Provision attached to the school and changing our model of Resource Provision to improve what we do, and outcomes for the children. To be able to extend this agenda to more children I believe we should be granted support and permission to expand. - - We have been looking for a way to extend our Resource Provision. Currently we have a 7 place provision for children with EHCP/statements for SEMH/behaviour. We have the only one in Cheshire East and I know places are in demand. If we could expand to a 3 form entry school, we would love to extend our RP to 14 places. We have not been able to do this in the past, despite our expertise with these children because of the issue of 'critical mass' within year groups and our mainstream children's then limited ability to influence positively the behaviour of RP children. Expansion would allow us to do this, support Cheshire East in their</p>
staff member hungerford	Yes	N/A	N/A	<p>Year 4 Consultation - As a year group, we feel this is a great opportunity to share the success of our school with other children. This opportunity to create new spaces for interventions, group work and any future initiatives will be extremely positive and exciting. - As teachers, we feel we will benefit from sharing ideas, resources and knowledge with other like-minded professionals. - Hopefully, the building work will not be too disruptive! <input type="checkbox"/> -</p>
staff member hungerford	Yes	N/A	N/A	<p>We are excited about the prospect of expansion - especially new opportunities and new experiences to be gained - There are some issues of space and logistics to be clarified but it will be great for the school and its children - Most exciting thing will be a bigger staff and more opportunities for collaboration</p>

staff member hungerford	Yes	N/A	N/A	Would be exciting for the school and we would benefit from being part of it. - More children would benefit from being included in our school with its special ethos - It's an opportunity to build on the positives already in the school - We have great governors who are loyal and committed to the school and school improvement - We could share our ideas with new staff and learn from them
staff member hungerford	Yes	N/A	N/A	More money into school can extend what we already do well and develop what we would like to do next - Better facilities - Larger breakfast club and after school clubs could be offered - we could affect more children and influence more families with our 'Hungerford magic' - However we need a bigger car park
staff member hungerford	Yes	N/A	N/A	Staff parking is already an issue - could we remedy this? - Opportunities will definitely arise out of expansion and we are always keen to grab chances for our children
parent wistaston	No View	No View	No	The school ground isn't big enough and the parking is a health and safety issue already everyday there is a confrontation and I've seen 2 accidents in the last month outside school it's not the place. The school is doing amazing now any disruption will not benefit the children. If this was to go ahead I would consider changing both my children's school.
parent wistaston	N/A	N/A	No	Why don't people look at how dangerous the parking already is around these schools how is that going to be controlled.
parent wistaston	No	No View	No View	-
parent wistaston	No	No	Yes	-
parent wistaston	No	N/A	Yes	-
parent wistaston	N/A	N/A	Yes	-
parent wistaston	No View	No View	Yes	-
parent wistaston	N/A	N/A	Yes	-
parent wistaston	N/A	N/A	Yes	The school would benefit from the expansion but people will be looking at how bad moreton rd is at drop off and pick up times so a 5min drop off point within the school grounds would be a big help. Also a larger dinner hall.
parent wistaston	No View	No View	Yes	-
parent wistaston	N/A	N/A	Yes	-
parent wistaston	N/A	N/A	Yes	-
parent wistaston	No	No	Yes	-
parent wistaston	No View	No View	Yes	-
parent wistaston	N/A	N/A	Yes	-
parent wistaston	N/A	N/A	Yes	-
parent wistaston	N/A	N/A	Yes	-

parent wistaston	No View	No View	No	There is already a major issue with the parking at wistaston Acadamy and as both a resident of moreton road and a parent of 2 pupils of the school I do not feel expanding the school will help I often get blocked in with cars or sat in traffic at school time due to the high volume of traffic. If the grass verge was made smaller and parking bays or drives were put in for residents this might make traffic issues less congested.
parent wistaston	No View	No View	Yes	-
parent wistaston	N/A	N/A	No	Absolute shocker! Driving through the school traffic at present is dangerous enough without more congestion! Not fair on residents living local to school either please have some consideration!
parent wistaston	No View	No View	Yes	-
parent wistaston	N/A	N/A	Yes	Excellent school and would benefit the community and children if it expanded. fully support.
parent wistaston	N/A	N/A	Yes	-
parent wistaston	No View	No View	Yes	-
parent wistaston	N/A	N/A	Yes	-
parent wistaston	N/A	N/A	Yes	-
parent wistaston	N/A	N/A	Yes	-
parent wistaston	N/A	N/A	Yes	-
parent wistaston	No View	No View	Yes	-
parent wistaston	No View	No	Yes	After recently attending a course at Monks Coppenhall I feel it is not a big enough site to comfortably expand. There was not enough space to accommodate 6 extra adults in the middle of the day let alone 210 extra pupils. It is directly of a main road & will cause much congestion. - Wistaston Accademy has recently been very well lead, recently gaining an outstanding ofstead report. There is space on the site and it is in a quieter area.
parent wistaston	Yes	Yes	Yes	-
parent wistaston	N/A	N/A	Yes	-
parent wistaston	No	Yes	Yes	Wistaston to service new homes being built Shavington way & monks copenhall to service new homes cross keys/parkers road
parent wistaston	No	No	Yes	-
parent wistaston	Yes	Yes	Yes	-
parent wistaston	Yes	Yes	Yes	-
parent wistaston	No View	No View	No View	This is a good idea but will only work if the road situation is included. Many parents won't accept places if it means they can't park. A 5 min drop of area within the school grounds would
parent wistaston	No View	No View	Yes	
parent wistaston	No View	No View	Yes	
parent wistaston	No View	No View	Yes	

parent wistaston	No View	No View	Yes	With a child already attending Wistaston and a child due to start reception in 2017, I feel strongly in favour of Wistaston Academy attaining the expansion
parent wistaston	No View	No View	No	What are the figures for an extra 210 pupils and vehicles that need to pick up and drop off Moreton Road is already congested enough. Thankfully I do not live on that road and can walk to school but on the occasions that I have used a vehicle, you end up driving around looking for a space. Blocked roads are constant due to poor driving and thinking. I also feel that Wistaston has a very very high portion of foreign children. And 210 more children would no doubt increase the percentage to a majority to foreign pupils which will affect pupils learning also teachers ability to teach to a steady timetable
parent wistaston	Yes	Yes	Yes	-
parent St Mary's	No	No	No	-
parent St Mary's	No	No	No	From the data presented, it is clear that there is a need to increase capacity generally in schools across the Crewe area. - However, I would request that consideration is given to the proximity and availability of places across the year groups in neighbouring schools when drawing up and finalising options. - As there is no significant increase in new houses planned in this particular locality, it would seem the need is greater elsewhere. - Over time, governors and the LA in partnership have invested in our school and site, ensuring we have the capacity to meet local needs. We have worked closely and co-operatively with the LA in placing pupils both in reception and as casual in-year admissions throughout the school. - Our OFSTED inspection recognises that we are a good school and remain a popular choice with parents locally. - As a long established, thriving school with a good reputation, we offer exceptional value for money as we have high quality teaching and support staff, well-resourced teaching areas and prepare the children for life in the 21st century. We therefore represent an effective and efficient use of public funds without the significant expense of six new classrooms and additional staff and resource and site costs. -
parent St Mary's	No	No	No	As there is already a Faith school with available places in the catchment area for all the schools proposed for expansion, there surely is no need for an additional school and available funds could be better used filling the schools with available places and providing free reliable transport where needed.

parent St Mary's	No	No	No	From the data presented, it is clear that there is a need to increase capacity generally in schools across the Crewe area. - However, I would request that consideration is given to the proximity and availability of places across the year groups in neighbouring schools when drawing up and finalising options. - As there is no significant increase in new houses planned in this particular locality, it would seem the need is greater elsewhere. - Over time, governors and the LA in partnership have invested in our school and site, ensuring we have the capacity to meet local needs. We have worked closely and co-operatively with the LA in placing pupils both in reception and as casual in-year admissions throughout the school. - Our OFSTED inspection recognises that we are a good school and remain a popular choice with parents locally. - As a long established, thriving school with a good reputation, we offer exceptional value for money as we have high quality teaching and support staff, well-resourced teaching areas and prepare the children for life in the 21st century. We therefore represent an effective and efficient use of public funds without the significant expense of six new classrooms and additional staff and resource and site costs. -
parent wistaston	Yes	No	No View	-
parent hungerford	Yes	N/A	N/A	-
parent hungerford	No	Yes	Yes	-
parent hungerford	No	Yes	Yes	-
parent hungerford	Yes	No View	No View	Hungerford Academy is an excellent school and should be able to expand its facilities to provide the excellent teaching that ALL children deserve to as many as possible.
parent wistaston	No View	No View	No	-
parent wistaston	Yes	Yes	Yes	-
parent wistaston	No View	Yes	Yes	-
local resident/other	No	No	No	The schools should cap the amount of children. The classes are big enough as they are. Build a new school to accommodate these children. If the council are building so many houses near to these schools, then build a new school too rather than over pack the current schools.

neighbouring school	No View	No View	No	From the data presented, it is clear that there is a need to increase capacity generally in schools across the Crewe area. - However, I would request that consideration is given to the proximity and availability of places across the year groups in neighbouring schools when drawing up and finalising options. - As there is no significant increase in new houses planned in this particular locality, it would seem the need is greater elsewhere. - Over time, governors and the LA in partnership have invested in our school and site, ensuring we have the capacity to meet local needs. We have worked closely and co-operatively with the LA in placing pupils both in reception and as casual in-year admissions throughout the school. - Our OFSTED inspection recognises that we are a good school and remain a popular choice with parents locally. - As a long established, thriving school with a good reputation, we offer exceptional value for money as we have high quality teaching and support staff, well-resourced teaching areas and prepare the children for life in the 21st century. We therefore represent an effective and efficient use of public funds without the significant expense of six new classrooms and additional staff and resource and site costs. -
neighbouring school	No View	No View	No	From the data presented, it is clear that there is a need to increase capacity generally in schools across the Crewe area. - However, I would request that consideration is given to the proximity and availability of places across the year groups in neighbouring schools when drawing up and finalising options. - As there is no significant increase in new houses planned in this particular locality, it would seem the need is greater elsewhere. - Over time, governors and the LA in partnership have invested in our school and site, ensuring we have the capacity to meet local needs. We have worked closely and co-operatively with the LA in placing pupils both in reception and as casual in-year admissions throughout the school. - Our OFSTED inspection recognises that we are a good school and remain a popular choice with parents locally. - As a long established, thriving school with a good reputation, we offer exceptional value for money as we have high quality teaching and support staff, well-resourced teaching areas and prepare the children for life in the 21st century. We therefore represent an effective and efficient use of public funds without the significant expense of six new classrooms and additional staff and resource and site costs. -
neighbouring school	N/A	N/A	No	-

neighbouring school	No View	No View	No	From the data presented, it is clear that there is a need to increase capacity generally in schools across the Crewe area. - However, I would request that consideration is given to the proximity and availability of places across the year groups in neighbouring schools when drawing up and finalising options. - As there is no significant increase in new houses planned in this particular locality, it would seem the need is greater elsewhere. - Over time, governors and the LA in partnership have invested in our school and site, ensuring we have the capacity to meet local needs. We have worked closely and co-operatively with the LA in placing pupils both in reception and as casual in-year admissions throughout the school. - Our OFSTED inspection recognises that we are a good school and remain a popular choice with parents locally. - As a long established, thriving school with a good reputation, we offer exceptional value for money as we have high quality teaching and support staff, well-resourced teaching areas and prepare the children for life in the 21st century. We therefore represent an effective and efficient use of public funds without the significant expense of six new classrooms and additional staff and resource and site costs. -
neighbouring school	No	No	No	From the data presented, it is clear that there is a need to increase capacity generally in schools across the Crewe area. - However, I would request that consideration is given to the proximity and availability of places across the year groups in neighbouring schools when drawing up and finalising options. - As there is no significant increase in new houses planned in this particular locality, it would seem the need is greater elsewhere. - Over time, governors and the LA in partnership have invested in our school and site, ensuring we have the capacity to meet local needs. We have worked closely and co-operatively with the LA in placing pupils both in reception and as casual in-year admissions throughout the school. - Our OFSTED inspection recognises that we are a good school and remain a popular choice with parents locally. - As a long established, thriving school with a good reputation, we offer exceptional value for money as we have high quality teaching and support staff, well-resourced teaching areas and prepare the children for life in the 21st century. We therefore represent an effective and efficient use of public funds without the significant expense of six new classrooms and additional staff and resource and site costs. -

neighbouring school	No	No	No	From the data presented, it is clear that there is a need to increase capacity generally in schools across the Crewe area. - However, I would request that consideration is given to the proximity and availability of places across the year groups in neighbouring schools when drawing up and finalising options. - As there is no significant increase in new houses planned in this particular locality, it would seem the need is greater elsewhere. - Over time, governors and the LA in partnership have invested in our school and site, ensuring we have the capacity to meet local needs. We have worked closely and co-operatively with the LA in placing pupils both in reception and as casual in-year admissions throughout the school. - Our OFSTED inspection recognises that we are a good school and remain a popular choice with parents locally. - As a long established, thriving school with a good reputation, we offer exceptional value for money as we have high quality teaching and support staff, well-resourced teaching areas and prepare the children for life in the 21st century. We therefore represent an effective and efficient use of public funds without the significant expense of six new classrooms and additional staff and resource and site costs. -
neighbouring school	No	No	No	From the data presented, it is clear that there is a need to increase capacity generally in schools across the Crewe area. - - However, I would request that consideration is given to the proximity and availability of places across the year groups in neighbouring schools when drawing up and finalising options. - - As there is no significant increase in new houses planned in this particular locality, it would seem the need is greater elsewhere. - - Over time, governors and the LA in partnership have invested in our school and site, ensuring we have the capacity to meet local needs. We have worked closely and co-operatively with the LA in placing pupils both in reception and as casual in-year admissions throughout the school. - - Our OFSTED inspection recognises that we are a good school and remain a popular choice with parents locally. - - As a long established, thriving school with a good reputation, we offer exceptional value for money as we have high quality teaching and support staff, well-resourced teaching areas and prepare the children for life in the 21st century. We therefore represent an effective and efficient use of public funds without the significant expense of six new classrooms and additional staff and resource and site costs. - -



neighbouring school	No	No	No	From the data presented, it is clear that there is a need to increase capacity generally in schools across the Crewe area. - However, I would request that consideration is given to the proximity and availability of places across the year groups in neighbouring schools when drawing up and finalising options. - As there is no significant increase in new houses planned in this particular locality, it would seem the need is greater elsewhere. - Over time, governors and the LA in partnership have invested in our school and site, ensuring we have the capacity to meet local needs. We have worked closely and co-operatively with the LA in placing pupils both in reception and as casual in-year admissions throughout the school. - Our OFSTED inspection recognises that we are a good school and remain a popular choice with parents locally. - As a long established, thriving school with a good reputation, we offer exceptional value for money as we have high quality teaching and support staff, well-resourced teaching areas and prepare the children for life in the 21st century. We therefore represent an effective and efficient use of public funds without the significant expense of six new classrooms and additional staff and resource and site costs. -
neighbouring school	No	No	No	From the data presented, it is clear that there is a need to increase capacity generally in schools across the Crewe area. - However, I would request that consideration is given to the proximity and availability of places across the year groups in neighbouring schools when drawing up and finalising options. - As there is no significant increase in new houses planned in this particular locality, it would seem the need is greater elsewhere. - Over time, governors and the LA in partnership have invested in our school and site, ensuring we have the capacity to meet local needs. We have worked closely and co-operatively with the LA in placing pupils both in reception and as casual in-year admissions throughout the school. - Our OFSTED inspection recognises that we are a good school and remain a popular choice with parents locally. - As a long established, thriving school with a good reputation, we offer exceptional value for money as we have high quality teaching and support staff, well-resourced teaching areas and prepare the children for life in the 21st century. We therefore represent an effective and efficient use of public funds without the significant expense of six new classrooms and additional staff and resource and site costs.
neighbouring school	Yes	Yes	No View	-
neighbouring school	No	No	No	-

neighbouring school	No	No	No	Children need to be nurtured as individuals and have a curriculum that suits their individual needs not a best fit in a class of 30. This is even more important now the national expectation goal post have changed. I understand that two of these schools have behavioural issues? When children do not feel safe within school this has a massive impact of their learning. What effect will this have on the local smaller 'family orientated' schools? Large schools do not suit all families (children with mild autism for example). Will they be forced to shut? - Crewe schools have strived to reach good or above in Ofsted inspections in recent years. Part of this achievement is down to consistency and the well-being of teachers, parents and children. Does Cheshire East really want to put this in jeopardy? Unrest will fuel this. -
neighbouring school	No	No	No	-
neighbouring school	No	No	No	From the data presented, it is clear that there is a need to increase capacity generally in schools across the Crewe area. - However, I would request that consideration is given to the proximity and availability of places across the year groups in neighbouring schools when drawing up and finalising options. - As there is no significant increase in new houses planned in this particular locality, it would seem the need is greater elsewhere. - Over time, governors and the LA in partnership have invested in our school and site, ensuring we have the capacity to meet local needs. We have worked closely and co-operatively with the LA in placing pupils both in reception and as casual in-year admissions throughout the school. - Our OFSTED inspection recognises that we are a good school and remain a popular choice with parents locally. - As a long established, thriving school with a good reputation, we offer exceptional value for money as we have high quality teaching and support staff, well-resourced teaching areas and prepare the children for life in the 21st century. We therefore represent an effective and efficient use of public funds without the significant expense of six new classrooms and additional staff and resource and site costs. -

neighbouring school	No	No	No	From the data presented, it is clear that there is a need to increase capacity generally in schools across the Crewe area. - However, I would request that consideration is given to the proximity and availability of places across the year groups in neighbouring schools when drawing up and finalising options. - As there is no significant increase in new houses planned in this particular locality, it would seem the need is greater elsewhere. - Over time, governors and the LA in partnership have invested in our school and site, ensuring we have the capacity to meet local needs. We have worked closely and co-operatively with the LA in placing pupils both in reception and as casual in-year admissions throughout the school. - Our OFSTED inspection recognises that we are a good school and remain a popular choice with parents locally. - As a long established, thriving school with a good reputation, we offer exceptional value for money as we have high quality teaching and support staff, well-resourced teaching areas and prepare the children for life in the 21st century. We therefore represent an effective and efficient use of public funds without the significant expense of six new classrooms and additional staff and resource and site costs. - - - -
neighbouring school	No	No	No	-
neighbouring school	No	No	No	We already have schools in the area with places available.
neighbouring school	No	No	No	From the data presented, it is clear that there is a need to increase capacity generally in schools across the Crewe area. - However, I would request that consideration is given to the proximity and availability of places across the year groups in neighbouring schools when drawing up and finalising options. - As there is no significant increase in new houses planned in this particular locality, it would seem the need is greater elsewhere. - Over time, governors and the LA in partnership have invested in our school and site, ensuring we have the capacity to meet local needs. We have worked closely and co-operatively with the LA in placing pupils both in reception and as casual in-year admissions throughout the school. - Our OFSTED inspection recognises that we are a good school and remain a popular choice with parents locally. - As a long established, thriving school with a good reputation, we offer exceptional value for money as we have high quality teaching and support staff, well-resourced teaching areas and prepare the children for life in the 21st century. We therefore represent an effective and efficient use of public funds without the significant expense of six new classrooms and additional staff and resource and site costs. -

neighbouring school	No View	No View	No	From the data presented, it is clear that there is a need to increase capacity generally in schools across the Crewe area. - However, I would request that consideration is given to the proximity and availability of places across the year groups in neighbouring schools when drawing up and finalising options. - As there is no significant increase in new houses planned in this particular locality, it would seem the need is greater elsewhere. - Over time, governors and the LA in partnership have invested in our school and site, ensuring we have the capacity to meet local needs. We have worked closely and co-operatively with the LA in placing pupils both in reception and as casual in-year admissions throughout the school. - Our OFSTED inspection recognises that we are a good school and remain a popular choice with parents locally. - As a long established, thriving school with a good reputation, we offer exceptional value for money as we have high quality teaching and support staff, well-resourced teaching areas and prepare the children for life in the 21st century. We therefore represent an effective and efficient use of public funds without the significant expense of six new classrooms and additional staff and resource and site costs. -
neighbouring school	No	No	No	From the data presented, it is clear that there is a need to increase capacity generally in schools across the Crewe area. - However, I would request that consideration is given to the proximity and availability of places across the year groups in neighbouring schools when drawing up and finalising options. - As there is no significant increase in new houses planned in this particular locality, it would seem the need is greater elsewhere. - Over time, governors and the LA in partnership have invested in our school and site, ensuring we have the capacity to meet local needs. We have worked closely and co-operatively with the LA in placing pupils both in reception and as casual in-year admissions throughout the school. - Our OFSTED inspection recognises that we are a good school and remain a popular choice with parents locally. - As a long established, thriving school with a good reputation, we offer exceptional value for money as we have high quality teaching and support staff, well-resourced teaching areas and prepare the children for life in the 21st century. We therefore represent an effective and efficient use of public funds without the significant expense of six new classrooms and additional staff and resource and site costs. -

neighbouring school	No	No	No	From the data presented, it is clear that there is a need to increase capacity generally in schools across the Crewe area. - However, I would request that consideration is given to the proximity and availability of places across the year groups in neighbouring schools when drawing up and finalising options. - As there is no significant increase in new houses planned in this particular locality, it would seem the need is greater elsewhere. - Over time, governors and the LA in partnership have invested in our school and site, ensuring we have the capacity to meet local needs. We have worked closely and co-operatively with the LA in placing pupils both in reception and as casual in-year admissions throughout the school. - Our OFSTED inspection recognises that we are a good school and remain a popular choice with parents locally. - As a long established, thriving school with a good reputation, we offer exceptional value for money as we have high quality teaching and support staff, well-resourced teaching areas and prepare the children for life in the 21st century. We therefore represent an effective and efficient use of public funds without the significant expense of six new classrooms and additional staff and resource and site costs
neighbouring school	No	No	No	From the data presented, it is clear that there is a need to increase capacity generally in schools across the Crewe area. - However, I would request that consideration is given to the proximity and availability of places across the year groups in neighbouring schools when drawing up and finalising options. - As there is no significant increase in new houses planned in this particular locality, it would seem the need is greater elsewhere. - Over time, governors and the LA in partnership have invested in our school and site, ensuring we have the capacity to meet local needs. We have worked closely and co-operatively with the LA in placing pupils both in reception and as casual in-year admissions throughout the school. - Our OFSTED inspection recognises that we are a good school and remain a popular choice with parents locally. - As a long established, thriving school with a good reputation, we offer exceptional value for money as we have high quality teaching and support staff, well-resourced teaching areas and prepare the children for life in the 21st century. We therefore represent an effective and efficient use of public funds without the significant expense of six new classrooms and additional staff and resource and site costs. - -

neighbouring school	No View	No View	No	From the data presented, it is clear that there is a need to increase capacity generally in schools across the Crewe area. - - However, I would request that consideration is given to the proximity and availability of places across the year groups in neighbouring schools when drawing up and finalising options. - - As there is no significant increase in new houses planned in this particular locality, it would seem the need is greater elsewhere. - - Over time, governors and the LA in partnership have invested in our school and site, ensuring we have the capacity to meet local needs. We have worked closely and co-operatively with the LA in placing pupils both in reception and as casual in-year admissions throughout the school. - - Our OFSTED inspection recognises that we are a good school and remain a popular choice with parents locally. - - As a long established, thriving school with a good reputation, we offer exceptional value for money as we have high quality teaching and support staff, well-resourced teaching areas and prepare the children for life in the 21st century. We therefore represent an effective and efficient use of public funds without the significant expense of six new classrooms and additional staff and resource and site costs. -
neighbouring school	No View	No View	No	From the data presented, it is clear that there is a need to increase capacity generally in schools across the Crewe area. - - However, I would request that consideration is given to the proximity and availability of places across the year groups in neighbouring schools when drawing up and finalising options. - - As there is no significant increase in new houses planned in this particular locality, it would seem the need is greater elsewhere. - - Over time, governors and the LA in partnership have invested in our school and site, ensuring we have the capacity to meet local needs. We have worked closely and co-operatively with the LA in placing pupils both in reception and as casual in-year admissions throughout the school. - - Our OFSTED inspection recognises that we are a good school and remain a popular choice with parents locally. - - As a long established, thriving school with a good reputation, we offer exceptional value for money as we have high quality teaching and support staff, well-resourced teaching areas and prepare the children for life in the 21st century. We therefore represent an effective and efficient use of public funds without the significant expense of six new classrooms and -

neighbouring school	No View	No View	No	From the data presented, it is clear that there is a need to increase capacity generally in schools across the Crewe area. - However, I would request that consideration is given to the proximity and availability of places across the year groups in neighbouring schools when drawing up and finalising options. - As there is no significant increase in new houses planned in this particular locality, it would seem the need is greater elsewhere. - Over time, governors and the LA in partnership have invested in our school and site, ensuring we have the capacity to meet local needs. We have worked closely and co-operatively with the LA in placing pupils both in reception and as casual in-year admissions throughout the school. - Our OFSTED inspection recognises that we are a good school and remain a popular choice with parents locally. - As a long established, thriving school with a good reputation, we offer exceptional value for money as we have high quality teaching and support staff, well-resourced teaching areas and prepare the children for life in the 21st century. We therefore represent an effective and efficient use of public funds without the significant expense of six new classrooms and additional staff and resource and site costs. -
neighbouring school	No	No	No	Other local schools have places available
neighbouring school	No View	Yes	No	From the data presented, it is clear that there is a need to increase capacity generally in schools across the Crewe area. - However, I would request that consideration is given to the proximity and availability of places across the year groups in neighbouring schools when drawing up and finalising options. - As there is no significant increase in new houses planned in this particular locality, it would seem the need is greater elsewhere. - Over time, governors and the LA in partnership have invested in our school and site, ensuring we have the capacity to meet local needs. We have worked closely and co-operatively with the LA in placing pupils both in reception and as casual in-year admissions throughout the school. - Our OFSTED inspection recognises that we are a good school and remain a popular choice with parents locally. - As a long established, thriving school with a good reputation, we offer exceptional value for money as we have high quality teaching and support staff, well-resourced teaching areas and prepare the children for life in the 21st century. We therefore represent an effective and efficient use of public funds without the significant expense of six new classrooms and additional staff and resource and site costs. - - - -

neighbouring school	Yes	Yes	No	From the data presented, it is clear that there is a need to increase capacity generally in schools across the Crewe area. - However, I would request that consideration is given to the proximity and availability of places across the year groups in neighbouring schools when drawing up and finalising options. - As there is no significant increase in new houses planned in this particular locality, it would seem the need is greater elsewhere. - Over time, governors and the LA in partnership have invested in our school and site, ensuring we have the capacity to meet local needs. We have worked closely and co-operatively with the LA in placing pupils both in reception and as casual in-year admissions throughout the school. - Our OFSTED inspection recognises that we are a good school and remain a popular choice with parents locally. - As a long established, thriving school with a good reputation, we offer exceptional value for money as we have high quality teaching and support staff, well-resourced teaching areas and prepare the children for life in the 21st century. We therefore represent an effective and efficient use of public funds without the significant expense of six new classrooms and additional staff and resource and site costs. - - -
neighbouring school	No View	No View	No	From the data presented, it is clear that there is a need to increase capacity generally in schools across the Crewe area. - - However, I would request that consideration is given to the proximity and availability of places across the year groups in neighbouring schools when drawing up and finalising options. - - As there is no significant increase in new houses planned in this particular locality, it would seem the need is greater elsewhere. - - Over time, governors and the LA in partnership have invested in our school and site, ensuring we have the capacity to meet local needs. We have worked closely and co-operatively with the LA in placing pupils both in reception and as casual in-year admissions throughout the school. - - Our OFSTED inspection recognises that we are a good school and remain a popular choice with parents locally. - - As a long established, thriving school with a good reputation, we offer exceptional value for money as we have high quality teaching and support staff, well-resourced teaching areas and prepare the children for life in the 21st century. We therefore represent an effective and efficient use of public funds without the significant expense of six new classrooms and additional staff and resource and site costs.



neighbouring school	No View	No View	No	From the data presented, it is clear that there is a need to increase capacity generally in schools across the Crewe area. - However, I would request that consideration is given to the proximity and availability of places across the year groups in neighbouring schools when drawing up and finalising options. - As there is no significant increase in new houses planned in this particular locality, it would seem the need is greater elsewhere. - Over time, governors and the LA in partnership have invested in our school and site, ensuring we have the capacity to meet local needs. We have worked closely and co-operatively with the LA in placing pupils both in reception and as casual in-year admissions throughout the school. - Our OFSTED inspection recognises that we are a good school and remain a popular choice with parents locally. - As a long established, thriving school with a good reputation, we offer exceptional value for money as we have high quality teaching and support staff, well-resourced teaching areas and prepare the children for life in the 21st century. We therefore represent an effective and efficient use of public funds without the significant expense of six new classrooms and additional staff and resource and site costs. -
neighbouring school	No View	No View	No	From the data presented, it is clear that there is a need to increase capacity generally in schools across the Crewe area. - However, I would request that consideration is given to the proximity and availability of places across the year groups in neighbouring schools when drawing up and finalising options. - As there is no significant increase in new houses planned in this particular locality, it would seem the need is greater elsewhere. - Over time, governors and the LA in partnership have invested in our school and site, ensuring we have the capacity to meet local needs. We have worked closely and co-operatively with the LA in placing pupils both in reception and as casual in-year admissions throughout the school. - Our OFSTED inspection recognises that we are a good school and remain a popular choice with parents locally. - As a long established, thriving school with a good reputation, we offer exceptional value for money as we have high quality teaching and support staff, well-resourced teaching areas and prepare the children for life in the 21st century. We therefore represent an effective and efficient use of public funds without the significant expense of six new classrooms and additional staff and resource and site costs. - - - -
neighbouring school	No	No	No	At St Marys Catholic primary school which is close by has many free spaces Available.

neighbouring school	No View	No View	No	From the data presented, it is clear that there is a need to increase capacity generally in schools across the Crewe area. - However, I would request that consideration is given to the proximity and availability of places across the year groups in neighbouring schools when drawing up and finalising options. - As there is no significant increase in new houses planned in this particular locality, it would seem the need is greater elsewhere. - Over time, governors and the LA in partnership have invested in our school and site, ensuring we have the capacity to meet local needs. We have worked closely and co-operatively with the LA in placing pupils both in reception and as casual in-year admissions throughout the school. - Our OFSTED inspection recognises that we are a good school and remain a popular choice with parents locally. - As a long established, thriving school with a good reputation, we offer exceptional value for money as we have high quality teaching and support staff, well-resourced teaching areas and prepare the children for life in the 21st century. We therefore represent an effective and efficient use of public funds without the significant expense of six new classrooms and additional staff and resource and site costs. -
neighbouring school	No	No	No	From the data presented, it is clear that there is a need to increase capacity generally in schools across the Crewe area. - However, I would request that consideration is given to the proximity and availability of places across the year groups in neighbouring schools when drawing up and finalising options. - As there is no significant increase in new houses planned in this particular locality, it would seem the need is greater elsewhere. - Over time, governors and the LA in partnership have invested in our school and site, ensuring we have the capacity to meet local needs. We have worked closely and co-operatively with the LA in placing pupils both in reception and as casual in-year admissions throughout the school. - Our OFSTED inspection recognises that we are a good school and remain a popular choice with parents locally. - As a long established, thriving school with a good reputation, we offer exceptional value for money as we have high quality teaching and support staff, well-resourced teaching areas and prepare the children for life in the 21st century. We therefore represent an effective and efficient use of public funds without the significant expense of six new classrooms and additional staff and resource and site costs. -

neighbouring school	No	No	No	From the data presented, it is clear that there is a need to increase capacity generally in schools across the Crewe area. - - However, I would request that consideration is given to the proximity and availability of places across the year groups in neighbouring schools when drawing up and finalising options. - - As there is no significant increase in new houses planned in this particular locality, it would seem the need is greater elsewhere. - - Over time, governors and the LA in partnership have invested in our school and site, ensuring we have the capacity to meet local needs. We have worked closely and co-operatively with the LA in placing pupils both in reception and as casual in-year admissions throughout the school. - - Our OFSTED inspection recognises that we are a good school and remain a popular choice with parents locally. - - As a long established, thriving school with a good reputation, we offer exceptional value for money as we have high quality teaching and support staff, well-resourced teaching areas and prepare the children for life in the 21st century. We therefore represent an effective and efficient use of public funds without the significant expense of six new classrooms and additional staff and resource and site costs. -
neighbouring school	No	No	No	From the data presented, it is clear that there is a need to increase capacity generally in schools across the Crewe area. - However, I would request that consideration is given to the proximity and availability of places across the year groups in neighbouring schools when drawing up and finalising options. - As there is no significant increase in new houses planned in this particular locality, it would seem the need is greater elsewhere. - Over time, governors and the LA in partnership have invested in our school and site, ensuring we have the capacity to meet local needs. We have worked closely and co-operatively with the LA in placing pupils both in reception and as casual in-year admissions throughout the school. - Our OFSTED inspection recognises that we are a good school and remain a popular choice with parents locally. - As a long established, thriving school with a good reputation, we offer exceptional value for money as we have high quality teaching and support staff, well-resourced teaching areas and prepare the children for life in the 21st century. We therefore represent an effective and efficient use of public funds without the significant expense of six new classrooms and additional staff and resource and site costs. -

neighbouring school	N/A	N/A	No	From the data presented, it is clear that there is a need to increase capacity generally in schools across the Crewe area. - However, I would request that consideration is given to the proximity and availability of places across the year groups in neighbouring schools when drawing up and finalising options. - As there is no significant increase in new houses planned in this particular locality, it would seem the need is greater elsewhere. - Over time, governors and the LA in partnership have invested in our school and site, ensuring we have the capacity to meet local needs. We have worked closely and co-operatively with the LA in placing pupils both in reception and as casual in-year admissions throughout the school. - Our OFSTED inspection recognises that we are a good school and remain a popular choice with parents locally. - As a long established, thriving school with a good reputation, we offer exceptional value for money as we have high quality teaching and support staff, well-resourced teaching areas and prepare the children for life in the 21st century. We therefore represent an effective and efficient use of public funds without the significant expense of six new classrooms and additional staff and resource and site costs. -
neighbouring school	No View	No View	No	From the data presented, it is clear that there is a need to increase capacity generally in schools across the Crewe area. - However, I would request that consideration is given to the proximity and availability of places across the year groups in neighbouring schools when drawing up and finalising options. - As there is no significant increase in new houses planned in this particular locality, it would seem the need is greater elsewhere. - Over time, governors and the LA in partnership have invested in our school and site, ensuring we have the capacity to meet local needs. We have worked closely and co-operatively with the LA in placing pupils both in reception and as casual in-year admissions throughout the school. - Our OFSTED inspection recognises that we are a good school and remain a popular choice with parents locally. - As a long established, thriving school with a good reputation, we offer exceptional value for money as we have high quality teaching and support staff, well-resourced teaching areas and prepare the children for life in the 21st century. We therefore represent an effective and efficient use of public funds without the significant expense of six new classrooms and additional staff and resource and site costs. -
neighbouring school	No View	No View	No	-

neighbouring school	Yes	Yes	Yes	<p>I write in response to the consultation regarding the proposed increase in primary provision. The proposal to increase provision through outstanding schools is a sound one and I am in favour of the proposal for Monks Coppenhall, Hungerford and Wistaston Academy to expand; they have the expertise, the strong leadership and it will secure strong outcomes for pupils. I have no doubt that the expanded places will be taken and welcomed by parents.</p> <p>However, in terms of the accommodation issue of additional classes and the associated requirements of a rounded curriculum and school day, I would also like to suggest that the LA consider finding another school site. My thoughts are that one of the Academies could lead another new primary, on a different site and within a MAT. This could also be true of Wistaston Church Lane. All four Academies/ schools are outstanding and I have no doubt that they would transfer these skills to a new school site, with an associate head teacher in post in the new school, and deliver similar outcomes.</p> <p>The Basford East/ West development has a primary as part of the plans I believe and we have space on our site for a primary to be built. I understand that this is a much more expensive option than an additional classroom for each of the three primaries, with less planning to complete up front, but that is only for the first year and a short term solution. If the PAN is increased by 30 each year, it will involve 12 mobiles over the four years. Each reception needs an outdoor play area and an addition of four classes has associated building that will need to be provided- catering, toilets, ICT facilities etc. It may be that building one school is actually no more expensive than adding to three. My understanding is that the schools proposed have no in year capacity for the growth beyond reception, and therefore the current proposal only solves the problem of reception in 2017. My view is that, whilst it would be more work, a primary on a new site would be a better long term solution, within a multi academy trust arrangement. I believe that this is the direction of travel for the DfE, and to launch the first multi academy trust of Cheshire east would provide a 'spade in the ground', an exemplar, for this way of working for those primaries (and secondaries) who are not currently financially viable, currently, and who then might consider a new way of working.</p>
neighbouring school	Yes	Yes	Yes	This would be good as we need more schools in those areas due to more population.
neighbouring school	Yes	Yes	No	-
staff member wistaston	N/A	N/A	Yes	Good for the community
local resident/other	N/A	N/A	Yes	-
local resident/other	N/A	N/A	Yes	-
local resident/other	No	No	No	Why did you close Lodgefields?! Madness
local resident/other	Yes	Yes	Yes	-
local resident/other	Yes	Yes	Yes	-

local resident/other	Yes	Yes	Yes	Will there be an expansion of Shavington Primary or a new primary school created where all of the new houses are being built on the outskirts of Shavington along Gresty Road / the new A500 link road?
local resident/other	No View	No View	No	The only people to benefit out of the school expansion is all the foreigners coming over!! Have you thought about the local residents as the parking is a nightmare as it is now!!! Totally disagree <input type="checkbox"/> <input type="checkbox"/>
local resident/other	Yes	No	No View	-
local resident/other	Yes	No	No View	Monks Coppenhall school is on a very busy road, danger to children is already high more pupils will increase the risk.
local resident/other	N/A	N/A	Yes	-
local resident/other	No	Yes	Yes	Not enough parking space or space in the playground at Hungerford
local resident/other	No	No	No View	Whilst there has been consideration to the availability of land and the financial impact to the council in acquiring new land to build a new school there has been no thought for the impact that these expansions will have on the residents local to the schools if they are expended. This is primarily the impact on traffic volumes, noise and air pollution on School Crescent, Hungerford Road and Remer Street. Whilst I am aware of the million pound budget announced by Cheshire East council for traffic control measures to mitigate speed issues around schools, from my experience of living near to Hungerford Primary Academy the traffic in Buxton, Hungerford and Lea Avenue due to parents dropping their children off at the school and their reluctance to show thought for residents and other road users impacts on the local roads both in the morning rush hour and mid afternoon on top of congestion caused by student residents. I strongly feel that the councillors, education and highways department should be liaising about this matter to develop a workable plan. Given the new developments on Remer Street I would expect a similar situation to arise there too. - - I would also point out that if the school does effectively double in size the travel to school on foot by pre teen schools is not safe on a main road such as Hungerford Road. Because there is one crossing on Hungerford Road and given its position many do not use the crossing and cross at the junctions of Hungerford and Lea Avenue which obviously endangers both pedestrians and drivers. - - All in all I think this proposal has been done with the impetus of providing a solution to the recent population boom and to understandably make the expansion of school places in a financial prudent manner however I do not feel that the financial impact this will have on the local community in terms of traffic volume and pollution.
local resident/other	No	No	Yes	-
local resident/other	No	No	Yes	-
local resident/other	No	No	Yes	-
local resident/other	No	No	Yes	-
local resident/other	No	No	Yes	-

local resident/other	N/A	N/A	Yes	-
local resident/other	No View	No View	No	-
local resident/other	N/A	N/A	no	<p>In 2007 Lodgefield CP school in Crewe was closed due to lack of pupil admissions and was as such amalgamated with what is now the Wistaston Academy. These sites are no more than 1mile walk apart. I find it bizarre that using the land currently owned by Cheshire East Council at the former Lodgefields site could not be utilised for another school covering Wistaston, Marshfield and Bentley.</p> <p>This land has been available to developers for almost a decade and with 150 houses planned north of Wistaston Green Road, rather than developing this site it would seem that the plot is unsellable.</p> <p>The site is linked to local housing and employers via the connect2 cycle route, and the Lodgefields estate has many alleyways connected to the site which would alleviate parking issues.</p> <p>I struggle to accept that a modern fit for purpose school could not be built on this site, for the same cost as removing children's play areas and creating overcrowding in existing schools.</p> <p>This site is council owned and wouldn't cost anything other than the building costs, also there would be no disruption to children during the build.</p> <p>Please consider reusing the Lodgefields site as I am sure it would be of more benefit to local children and parents in the area.</p>
local resident/other	No View	No View	Yes	
local resident/other	No View	No View	Yes	
local resident/other	No View	No View	Yes	
local resident/other	No View	No View	Yes	
local resident/other	No View	No View	Yes	
local resident/other	No View	No View	Yes	
local resident/other	No View	No View	Yes	

governor hungerford	Yes	N/A	N/A	Statement from the Governors of the Behaviour and Safety Committee regarding the proposed expansion of Hungerford Primary Academy. - - Hungerford Primary Academy, - School Crescent, - Crewe, - CW1 5HA. - The behaviour and Safety strongly agree with the proposed expansion of Hungerford Primary Academy and in support, the following evidence shows the schools commitment to constantly evaluating and improving its buildings and grounds. - Over the last several years Hungerford has been continually developing its premises with a view to delivering the best environment for the children who attend the school to thrive and succeed in the most stimulating learning environment possible. - - The development of the premises includes: - • A self-funded two classroom extension with four offices and including a new main reception area. - • A climbing wall with provision for low level bouldering and high ropes. - • Comprehensive refurbishment of indoor and outdoor provision for pre-school. - • The car park extension to accommodate extra staff and visitors. - • Extended and improved kitchen facilities. - • Developed the lunch time spaces and routines in order to facilitate universal free school. - - Development of outdoor education at Hungerford Primary Academy which includes: - • An extensive outdoor education classroom. - • A Pergola to support the outdoor education of the children. - • Two fire pit areas. - • Development of the year group gardens. - • Space and materials for den building. - • Significant tree management to satisfy the needs of our residential neighbours in terms of increasing light and to provide a stimulating outdoor experience for our children. -
governor wistaston	N/A	N/A	Yes	-
governor wistaston	N/A	N/A	Yes	-
governor st mary's	N/A	N/A	No	From the data presented, it is clear that there is a need to increase capacity generally in schools across the Crewe area. - - However, I would request that consideration is given to the proximity and availability of places across the year groups in neighbouring schools when drawing up and finalising options. - - As there is no significant increase in new houses planned in this particular locality, it would seem the need is greater elsewhere. - - Over time, governors and the LA in partnership have invested in our school and site, ensuring we have the capacity to meet local needs. We have worked closely and co-operatively with the LA in placing pupils both in reception and as casual in-year admissions throughout the school. - - Our OFSTED inspection recognises that we are a good school and remain a popular choice with parents locally. - - As a long established, thriving school with a good reputation, we offer exceptional value for money as we have high quality teaching and support staff, well-resourced teaching areas and prepare the children for life in the 21st century. We therefore represent an effective and efficient use of public funds without the significant expense of six new classrooms and additional staff and resource and site costs.



governor st mary's	No	No	No	<p>From the data presented, it is clear that there is a need to increase capacity generally in schools across the Crewe area. - However, I would request that consideration is given to the proximity and availability of places across the year groups in neighbouring schools when drawing up and finalising options. - As there is no significant increase in new houses planned in this particular locality, it would seem the need is greater elsewhere. - Over time, governors and the LA in partnership have invested in our school and site, ensuring we have the capacity to meet local needs. We have worked closely and co-operatively with the LA in placing pupils both in reception and as casual in-year admissions throughout the school. - Our OFSTED inspection recognises that we are a good school and remain a popular choice with parents locally. - As a long established, thriving school with a good reputation, we offer exceptional value for money as we have high quality teaching and support staff, well-resourced teaching areas and prepare the children for life in the 21st century. We therefore represent an effective and efficient use of public funds without the significant expense of six new classrooms and additional staff and resource and site costs. - - - -</p>
--------------------	----	----	----	---

governor hungerford	Yes	N/A	N/A	<p>I have been connected with Hungerford Primary School since my Wife was appointed as a teacher at the School when it opened in 1971 and she served on its staff until she retired in the 1990s. I was appointed as a Governor of the School in 1994 and after spending a lengthy period as Chair I am currently a Trustee and Governor of the Academy. During my connection with the School/Academy I have seen it increase from a School with under 300 pupils and 7 teachers to its present pupil numbers of 443 (including 13 places for special needs pupils and a pre-school nursery) and over 80 members of staff including 23 teachers and 27 full and part-time Teaching Assistants. - - During my time as Chairman of Governors the School was considered to be Outstanding by two Ofsted inspections, is well thought - of by Parents, Pupils and ex-pupils in the locality and currently its Pupils perform well at all stages during their time at the School. There are a number of reasons why I feel that The Academy is fully capable of expanding into a three class intake from 2017 including :- - ● We have a fully committed Governing Body who work closely with an equally committed Headteacher who is fully supported by her Senior Teaching Staff and an enthusiastic group of well trained Teachers and support staff. The Academy also has School Council made up of pupils of various age groups who play a major role within the School. - - ● The School introduced all aspects of the New Curriculum one year before its national introduction in 2013. It has recently enhanced certain aspects of the curriculum by introducing outdoor activities provided by an 'Outdoor Teacher' and his support staff. - Aspects of the New Curriculum are also enhanced by the provision of over 40 visits each year to various exhibitions, museums and other organisations. - - ● Every member of the Governing Body tends to oversee different parts of the curriculum and other aspects of the Academy's activities such a Pupils with special needs, Premises etc. My own areas of interest are EYFS and the finances of the Academy. - - - ● The Headteacher and her Staff are very experienced in planning and monitoring major premises expansions in conjunction with the Local Authority. Our involvement with the latest premises expansion in 2013 - costing over £600000 - was fully financed by the School and we are now in the process of financing and building an 'Outdoor Classroom' to further enhance the education of all our pupils. - - ● The</p>
---------------------	-----	-----	-----	--

governor hungerford				Hungerford Primary Academy would be ideally placed to offer extra places for children in Crewe. - - I genuinely believe that we have high expectations of everyone connected with our flourishing and happy school, whether they be pupils, teachers, support staff, governors, or indeed parents - we have high satisfaction ratings from both children and parents. As a result of everyone's drive and commitment, our results with our children are good and we believe firmly in supporting all children. We believe in being inclusive. - - We offer a truly broad and balanced curriculum with lots of access to the outdoors and we actively seek to stay ahead of the game in what we offer our pupils. We are innovative in many aspects, one of the many examples being the appointment of a computing champion. Our curriculum focuses on developing skills as well as simply acquiring knowledge. - - We work hard as a school to ensure high quality teaching is maintained and we foster and develop new talent through supporting our NQTs and links with training organisations. - - We have a strong strategic direction, set by strong, cooperative governance at all levels, and our governors are actively engaged in our school. We genuinely care. Governors are assigned to our curriculum groups who feed back to myself as Teaching and Learning committee Chair. - - I teach at an independent secondary grammar school and I firmly believe that the quality of education that is offered to pupils at Hungerford Primary Academy is excellent. Both my children attend Hungerford and thoroughly enjoy their lessons and activities.
local councillor	Yes	No View	No View	
	No	No	No	These schools all have issues with parents and carers struggling to park to drop their children off at school. Residents have issues of visitors to these schools blocking their driveways or parking dangerously. Parents already drive past these schools to attend others too which are deemed 'better' in their eyes. - Build a new school with a large car park for everyone!
neighbouring school	Yes	Yes	N/A	-
neighbouring school	Yes	Yes	Yes	-
neighbouring school	Yes	Yes	Yes	-
neighbouring school	Yes	No View	Yes	-
neighbouring school	Yes	Yes	No View	-
neighbouring school	Yes	Yes	Yes	-
neighbouring school	Yes	Yes	Yes	less children are needed per class to ensure good progress and engagement.
neighbouring school	Yes	Yes	Yes	-
parent wistaston	yes	yes	No	with so many extra children I don't see how they can get individual attention. The community feel of the school ( Wistaston) will diminish. All of the hard work that has been done to improve the school so far will be wasted. How can there be enough outdoor space for 210 extra children, small children will feel lost in a school so big. parking is already an issue and will be unbearable with more cars.
parent wistaston	N/A	N/A	yes	

parent wistaston	No	No	No	I don't think this is a good idea. I don't see how current children will benefit from this. Local school only closed a few years ago. No parking, traffic nightmare and no lollipop lady.
------------------	----	----	----	---

	Do you support the proposed expansion?			
CONNECTION	Hungerford Academy	monks coppenhall	Wistaston Academy	Comments
pupil hungerford	Yes	No View	No View	I think our school should have more children so we can have even more friends and because there will be more teachers and therefore even more clubs. We would have more space inside school for things too. My school is the best as the teachers are kind and they take care of us and everyone is kind.
pupil hungerford	Yes	No View	No View	I love everything about my school. I like bringing things in to talk about with my class. My school is fun. I think more children should be able to have fun too.
pupil hungerford	Yes	N/A	N/A	* We would welcome new friends - * It would be nice to have new classrooms - * We would need a bigger carpet - * We would be able to get new toys to share - * We will get a bigger school so then there will be a place for everyone and everyone can go to school
pupil hungerford	Yes	N/A	N/A	* there would be more children to play with - * we would be able to have more computers - * nice new buildings - * more toys - * we could have more reading books - * we need 2 slides and a big climbing frame outside
pupil hungerford	Yes	N/A	N/A	* we can have new teachers - * We can have more fun because the new teachers will help all of us - * we like new children at our school and we always make everyone welcome - * New teachers will be good at different things and we will all get better at those things - * We have lots of outdoor learning and new children would really love this because we do - * we are really kind and we would be very kind to new children - * We have golden rules and we would show new children how to do this - * our school is fun and new children would enjoy it too -
pupil hungerford	Yes	N/A	N/A	Why should we have more children? - * because they need more space in a good school and we are the best - * Because we can make more friends - * Because we could have an upstairs - * Because we are happy to share our lovely, beautiful, marvellous super teachers - * because we could have more of these teachers - * Because we would be able to use better, new classrooms -
pupil hungerford	Yes	N/A	N/A	* We could have more after school clubs - * We welcome new people and more friends - * We could have a swimming pool - * if we had more money we could have even more equipment on the playground - * more expert teachers and helpers - * Mrs Futcher is the best headteacher
pupil hungerford	Yes	N/A	N/A	* we will show people in crewe how fantastic we are as a school - * we will have new teachers so we will learn new things - * perhaps we could have more play equipment - * our school will get more stuff - * We can make new friends - * It will make our school community stronger - * There would be more people to look after and care for - * There would be new people who could look after and care for us - * we could have more school councillors - * more children could help us with our secrets of success -
pupil hungerford	Yes	N/A	N/A	What could we offer? - * friendly school - * high standards of work - * high standards of behaviour - * wonderful teachers and helpers - * we are not racist - * brilliant PE and Art - * beautiful displays - * somewhere to belong - * Mrs Futcher is really good at showing everyone what to do - What could we get? - * better playground equipment - * an all weather pitch - * more teachers - * another deputy head like Mrs Bean - * more storage
pupil hungerford	Yes	N/A	N/A	* we'll be a bigger 'family' - * we'll have more friends - * we'll have people to help us - * we could work in different groups - * we could really help children who don't have a school to go to. - * more staff at dinner time - *
pupil hungerford	Yes	N/A	N/A	What are we good at that we could share? - * we are fair and friendly - * we work hard - * we help each other out - * we always try to represent a school family - * learning is fun - * we have brilliant outdoor education - * We look after our buildings - What could we have in a bigger school? - * new friends - * new teachers teaching new things - * different topics - * more experts - * new buildings - * new songs
pupil hungerford	Yes	N/A	N/A	* More teachers' skills - * we could have bigger hall - * we could share our brilliant climbing wall with more children - * Could we have better parking with perhaps a drop off zone? - * more male teachers? - * we have a great ethos which is about a school family to promote good values: Fairness, equality, creativity, sense of community and caring. We are good at sharing this. - * everyone always says how well behaved we are when we go out of school for trips and events. - -
pupil hungerford	Yes	N/A	N/A	* children without a school would get a uncertain education and we could offer them an astonishing opportunity - * more children would make the school more diverse - we could have more, different friends - * Our teachers are fantastic - every one of them and we could offer this to new children - * Our governors and all the adults believe in giving everyone a chance
pupil hungerford	Yes	N/A	N/A	* we could have an upper level (2 storeys) like a high school - it wouldn't take up much of the playground - * we have a massive field - * A whole new school with new entrances - * we could have an all-weather field to make up for the parts that are taken up with new classrooms - * we would have more money for equipment - * More opportunities to develop the school how we want to - * More after school clubs and lunchtime activities - * an underground car park would be a brilliant idea -
pupil hungerford	Yes	N/A	N/A	1. More teaching and support staff - 2. More support for children's learning - 3. More children to make friends with - 4. we could have state of the art technology in the new classes - 5. More children could access Resource provision and The Crescent - we want to give everyone a chance - 6. more money for resources - 7. We could upgrade the equipment on the playground - 8. Could we have science lab? - 9. Opportunity to extend the kitchen and what it offers - 10. Opportunity to extend before and after school clubs to help parents out. -
pupil wistaston	No View	No View	Yes	

**This page is intentionally left blank**

## Questions for children – Expansion Programme

### 1. Has anyone got any questions about the possibility of the school getting bigger?

Would there be enough room?

Would we have more than one teacher?

Would there be 30 children in each class?

Would some classes not be connected to the school?

How big would it be?

Are the classrooms moving around?

Will the corridor get bigger so we don't get squished?

Will we have new books/toys because there are more of us?

Will the playground get smaller?

Does that mean we have to knock the trees down and the field?

Will we need a bigger playground?

Will we need anymore / bigger classrooms?

Will we need to buy anymore chairs?

Will we need a music room?

How many more children?

Will more clubs go on?

How much money will we have left?

Would we have to miss any days while the school is getting built?

Would there be an upstairs?

Would the school have more toilets?

Which part of the school will be made bigger?

Will the school councillors have a meeting about it?

What will happen to our part of the school when the building starts?

**2. What are the good things that might happen if the school got bigger?**

Nicer rooms (new rooms)  
More children to play with  
More things to play with  
More water fountains!  
More friends  
Bigger playground  
More equipment  
Bigger classrooms  
New children might bring new learning/languages  
New building  
More toilets  
New activities to do  
Children who bring good ideas  
More people to help  
More teachers  
More room to walk/run around  
More displays of children's work  
Bigger dining hall  
Could we have another football pitch?  
Could we have another hall?  
We could have a swimming pool



### **3. Has anyone got worries about the school getting bigger?**

Might get lost

Not enough space on the playground

Might get hurt

Might be noisy

Might not have enough things to use if people don't share

Might not be able to find the worry box

Would we know all the names? (children and teachers)

We won't have enough seats in the dining room

Will there be enough money for new classrooms?

Can the school still buy enough dinners?

Will we have to share classroom resources?

If the school gets bigger it takes longer to walk around

That there might be new corridors

Might not be able to come to school while they are building with new bricks

More first aid accidents

More children to think about

Wet playtimes/dinnertimes

Will all children be able to go for lunch?

Assembly – lots of children in one place

Some children might bully us

**4. Has anyone got anything else they would like to say about the possibility of the school getting bigger?**

Mixed up classes

We would have more friends

Will we have naughty children coming?

Would we need a bigger register?

Will we need any more fire alarms?

Will we need more tables for dinner hall?

Most children think it is a good idea and we are excited about the prospect

## Supporting Information

- 1 October 2014 School Census based pupil forecasting data indicated the need to expand the number of Crewe primary school places in response to a forecast shortfall in capacity from September 2016 of 130 pupil places increasing to 313 by 2019. These forecasts took into account the demand arising from approved new housing development in the area as of 15 April 2015 of 214 pupil places.
- 2 The Department for Education basic need capital allocations are made to local authorities to support the capital requirement for providing new pupil places. Shortfalls in capacity are calculated by comparing the forecast pupil numbers in an academic year to capacity in each planning area with uplift by 2% being applied at planning area level to support an operational surplus. By including an operational surplus of 2%, which is intended to provide some spare capacity for accommodating reasonable journey times to school, some degree of parental choice and flexibility to allow for in-year admissions, the additional need forecast for 2019 increased to 429 pupil places. Full details were included in the consultation document, which is attached as **Appendix 1**.
- 3 Interim pupil forecasts using October 2015 School Census data are now available and these support the proposed change for Crewe of 420 additional places which, if approved, would allow for an increase in the reception intake of 60 pupil places. The 2015 interim forecasts, which include housing developments with planning approval at February 2016, indicate a shortfall in capacity from 2016 increasing to a need for 131 pupil places by 2020. By including a 2% operational surplus for this planning area the need increases to 240 school places by 2020. This is shown in the table below.

### Crewe Planning Area Place Planning – Reception to Year 6, including approved housing in February 2016.

Reception – Year 6 Class Forecasts Shortfall (-) or Surplus Places (+)					Reception – Year 6 Class Forecasts Including 2% operational surplus.				
2016	2017	2018	2019	2020	2016	2017	2018	2019	2020
-12	-79	-73	-81	-131	-121	-188	-182	-190	-240

Data source: October 2015 based pupil forecasts

- 4 The approved housing developments included in the 2015 forecasts are listed in the table below. The estimated number of school aged children from this new housing is referred to in the table as the 'pupil yield'<sup>1</sup>.

---

<sup>1</sup> Pupil yields are derived from the number of new houses with 2 or more bedrooms planned for the development and to this is applied a formula to produce a pupil yield. The formula is number of 2+bedroomed houses multiplied by 0.19 to give a primary school yield and the number of 2+bedroomed houses multiplied by 0.13 to give a secondary school yield.

**Housing Developments Pupil Yields**

Housing Development	Primary School Catchment	Total Pupil Yield	Pupil Yields Included in Forecasts	Post 2021 Pupil Yield (Not included in Forecasts)
Former Victoria School Site	Beechwood	10	6	0 (4 included in 2014)
Site of 2 and 4 Heathfield Ave/29, 29a and 31 Hightown	Beechwood	2	2	0
Linden Court	Brierley	3	3	0
138 Sydney Road	Hungerford Academy	43	24	19
35-41 Mablins Lane	Mablins Lane	3	3	0
Land North of Parkers Road	Mablins Lane/Leighton Academy	65	40	25
Broughton Road, Crewe	Monks Coppenhall	22	22	0
Coppenhall East	Monks Coppenhall	102	50	52
Former Royal Scot Pub, Plane Tree Drive,	Monks Coppenhall	2	2	0
Land West Of, Broughton Road,	Monks Coppenhall	10	10	0
Maw Green	Monks Coppenhall	27	25	0 (2 included in 2014 forecasts)
Bradfield Road	St Michael's Academy	2	2	0
Bombardier	Underwood West	21	21	0
Land to the north of Wistaston Green Road, Wistaston	Wistaston Academy	27	24	3
Land to rear of, the rectory, 44, Church Lane, Wistaston	Wistaston Church Lane	2	2	0
<b>Total</b>		<b>341</b> (236+105)	<b>236</b>	<b>99</b> (total housing yield of 105)

- 5 The table above shows that an estimated 99 additional pupil places could be needed beyond the forecasting period based on the approved housing developments and pupil yield methodology as at February 2016. In addition, there have been a further 2 new housing developments approved for this area since these forecasts were produced with a total pupil yield of 5 pupils.

Housing Development Application	Proposed Number of Dwellings	Primary School Catchment	Total Primary Pupil Yield
Land off Bridge Inn	14	St Michael's Academy	3
Land Southwest of Thorneyfields Farm	12	Hungerford Academy	2
<b>Total</b>	<b>26</b>		<b>5</b>

- 6 It is therefore useful to take these yields into account when considering school organisation proposals. This data is shown in the table below.

**Crewe Planning Area - Reception to Year 6, including approved housing in February 2016.**

<b>2020 Forecast Need including Approved Housing Pupil Yield</b>	<b>Additional Pupil Yield beyond 2020</b>	<b>Pupil Yield Post February approved housing</b>	<b>Total Need</b>	<b>Total Need with 2% Operational Surplus</b>
-131	-99	-5	-235	-344

- 7 There continues to be a significant impact on school places arising from new housing developments in the area. In addition to the aforementioned developments, there are other planning applications that at the time of producing this report are unresolved, which; if approved, would together yield an estimated 130 pupils. These are shown in the table below:

<b>Housing Development Application</b>	<b>Proposed Number of Dwellings</b>	<b>Primary School Catchment</b>	<b>Total Primary Pupil Yield</b>	<b>Status</b>
Sydney Road Phase 2	250	Hungerford Academy	48	Awaiting decision
Broughton Road (2)	105	Monks Coppenhall	20	Awaiting decision
Former Edleston Road School	46	Edleston Primary	8	Awaiting decision
Wistaston Church Lane	300	Wistaston Church Lane	54	Under Appeal
<b>Total</b>	<b>701</b>		<b>130</b>	

- 8 These unresolved developments, as shown in the table above, would generate a total need for this area of 365 pupil places and by including a necessary 2% operational surplus, the need for Crewe increases to 474 pupil places using the latest forecasts data.
- 9 On the basis of the housing data, there is a risk that the Local Authority will be unable meet its statutory duty to provide a sufficiency of school places for Crewe children unless changes are agreed.

**This page is intentionally left blank**



# **CREWE PRIMARY SCHOOL EXPANSION PROPOSALS**

**Consultation  
25 February - 25 March**

## **CONSULTATION DOCUMENT**

**Mark Bayley**  
**Head of Service – Achievement and School Improvement**  
**Cheshire East Borough Council**  
**Westfields, Sandbach**  
**Cheshire**  
**CW11 1HZ**

**February 2016**

## Introduction

The Local Authority has a statutory duty to provide sufficient school places for children resident in its area. An analysis of the latest pupil forecasts has identified the need to provide additional primary school places in Crewe in response to increasing pupil populations. The data produced indicates the need for an extra 420 school places (reception to year 6) which, if agreed, would provide 60 more reception class places from September 2017<sup>1</sup>. The Local Authority has therefore considered the current capacity of schools in Crewe and their potential for expansion using each school's site information. This identified three schools that could potentially be expanded, as shown in the table below. Following discussions with the Local Authority, the governing bodies/academy trusts, as shown in Table 1 below, have considered the need for extra school places in the area and have resolved to publish expansion proposals for their schools.

**Table 1 – Expansion proposals**

School	Proposer	Extra Pupil Places	Extra Reception Class Places
Hungerford Primary Academy	Academy Trust	210	30
Monks Coppenhall Primary	Governing Body	210	30
Wistaston Academy	Academy Trust	210	30

## Feedback your views....

Before any decisions can be taken on which expansion proposals should be progressed, the Local Authority, together in partnership with the academy trust and governing body proposers, would like to hear your views. All feedback received during the consultation period will be considered before decisions are taken on whether to proceed with a proposal.

**It is important to note that the Local Authority has identified the need for an additional 420 places for September 2017 and will consider all feedback received before deciding which of the three proposals it will support. We therefore urge you to consider the information presented in this document and return your comments and views by 24 March. Further information about how you can do this is provided towards the end of this document.**

## Background Information

As the Strategic Commissioner of School Places, Cheshire East Council has a statutory duty to ensure a sufficiency of school places for children resident in its area. October 2014 School Census based data indicates a shortage in the number of reception class

---

<sup>1</sup> Whilst it is intended that new places will be in place for September 2017, the implementation date cannot be guaranteed and therefore project completion may be delayed until later in the school term. This will depend on a number of factors, including planning permission and Section 77 playing field approval.



capacity in Crewe from September 2015. This is based on the current 780 reception class places. Whilst the pupil based data shows a small surplus in 2017, overall, forecasts indicate the need for a minimum of two extra reception classes (60 pupil places) to ensure there are sufficient places to meet demand and to provide some spare places (operational surplus) for accommodating reasonable journey times to school, some degree of parental choice and flexibility to allow for admissions in-year.

Table 2- Shows the forecast shortfall/surplus reception class places for the period 2015 - 2019.

**Table 2 - Crewe Planning Area Pupil Forecasts**

Reception Class Forecasts Shortfall (-) or Surplus Places (+)					Reception Class Forecasts Including 2% operational surplus.				
2015	2016	2017	2018	2019	2015	2016	2017	2018	2019
-74	-65	+24	-40	-40	-91	-82	+9	-56	-56

Data source: October 2014 based pupil forecasts

Table 3 - Shows the forecast shortfall/surplus primary places (reception–year 6) for the period 2015-2019.

**Table 3 - Crewe Planning Area Pupil Forecasts**

Reception – Year 6 Class Forecasts Shortfall (-) or Surplus Places (+)					Reception – Year 6 Class Forecasts Including 2% operational surplus.				
2015	2016	2017	2018	2019	2015	2016	2017	2018	2019
+24	-130	-214	-277	-313	-86	-243	-328	-393	-429

Data source: October 2014 based pupil forecasts

The data shown above in Tables 2 and 3 has taken into account the estimated number of pupils from new approved housing developments in the area as of 15.4.2015. This estimated number of school aged children is referred to in the table as the 'pupil yield'<sup>2</sup>. Information about which housing developments have been included is set out in Table 4 below.

**Table 4 – Housing Developments with Planning Permission at 15 April 2015**

Approved Housing Development	Catchment School	Pupil Yield Included in the Forecasts	Additional Pupil Yield Beyond the Forecasts	Total Estimated Pupil Yield
------------------------------	------------------	---------------------------------------	---	-----------------------------

<sup>2</sup> Pupil yields are derived from the number of new houses with 2 or more bedrooms planned for the development and to this is applied a formula to produce a pupil yield. The formula is number of 2+bedroomed houses multiplied by 0.19 to give a primary school yield and the number of 2+bedroomed houses multiplied by 0.13 to give a secondary school yield.

Former Victoria School Site	Beechwood	10	0	10
Linden Court	Brierley	3	0	3
Land North of Parkers Road	Leighton and Mablins Lane	56	16	72
Coppenhall East	Monks Coppenhall	84	29	113
Maw Green	Monks Coppenhall	28	2	30
Former Royal Scot Pub,	Monks Coppenhall	2	0	2
Bradfield Road	St Michael's Academy	2	0	2
Bombardier	Underwood West	21	0	21
West View	Underwood West	6	0	6
Rear of 44 Church Lane, Wistaston	Wistaston Church Lane	2	0	2
<b>Total Pupil Yields</b>		<b>214</b>	<b>47</b>	<b>261</b>

Table 4 shows that an estimated 47 additional pupil places could be needed beyond the forecasting period based on the approved housing developments and pupil yield methodology as at 15 April 2015.

In addition, there have been a further 6 new housing developments approved for this area since these forecasts were produced. These are shown below in table 5. This additional demand will be included in the 2015 based forecasts, which will be published later in the year. It is therefore useful to take into account the additional demand that these new houses could generate when considering the school organisation proposals set out in this consultation document.

**Table 5 - Housing developments with planning approval since 15 April 2015**

<b>Approved Housing Development</b>	<b>Catchment School</b>	<b>Total Pupil Yield</b>
138 Sydney Road	Hungerford	43
35-41 Mablins Lane	Mablins Lane	3
Broughton Road, Crewe	Monks Coppenhall	22
Land to the north of Wistaston Green Road, Wistaston	Wistaston Green	27
Land West Of, Broughton Road,	Monks Coppenhall	10
Site of 2 and 4 Heathfield Ave/29, 29a and 31 Hightown	Beechwood	2
<b>Total</b>		<b>107</b>

The additional 47 primary pupil yield estimated for beyond the forecasting period together with the 107 primary pupil yield for developments approved since 15 April 2015, could generate an additional demand for 154 pupil places, which; when taken together, indicates a potential shortfall of 467 (313+154) pupil places based on current pupil

numbers. This would, of course, depend on all approved housing as listed being completed by the end of the forecasting period.

The Local Authority's School Organisation Strategy Group; which has membership representing the views of the Diocesan authorities, Local Authority, primary and secondary schools and school governance, consider pupil forecasts and makes recommendations on school organisation matters. At a meeting held on 21 May 2015, the membership recommended that in seeking to expand provision, the following should be considered as first priority in any review:

- 1) When reviewing playing field area, to retain 80% or over of the Building Bulletin (BB)<sup>3</sup> recommended site area after expansion;
- 2) To expand popular and successful schools, where viable, by taking into account parental preference and demand for school places, together with Ofsted outcomes;
- 3) To achieve an end result that allows for single form of entry class organisation arrangements.

In accordance with these recommendations, the 14 primary schools in the Crewe planning area were ranked according to these criteria, with the site area assessment having the overriding priority to ensure the deliverability of any proposal .

**Table 6 – Crewe Schools Ranking**

School	Ranking	BB103 Site Area Assessment	BB103 Site Rating
Wistaston Academy	13	95%	green
Monks Coppenhall	6	91%	green
Hungerford	5	80%	green
Wistaston Church Lane	4	79%	amber
Vine Tree	8	71%	amber
St Michael's	13	69%	red
St Mary's	10	62%	red
Leighton Academy	1	49%	Grey
Gainsborough	2	48%	Grey
Underwood	11	46%	Grey
Beechwood	3	45%	Grey
Mablins Lane	9	44%	Grey
Edleston	7	30%	Grey
Brierley	11	14%	Grey

---

<sup>3</sup> 'Building Bulletin 103, Area guidelines for mainstream school' provides non-statutory area guidelines for mainstream school buildings and sites for all age ranges from 3 to 19. The guidance is used to estimate the area needed for new schools, as well as the extra building area that may be needed for schools increasing in size.

The ranking of schools shown in table 6 has been produced from OFSTED results and a weighting of 1st preferences to published admission numbers (PAN) ratios of 30% for 2012, 30% for 2013 and 40% for 2014.

School sites are rated against BB103 recommendation as: Green, over 80%; Amber, between 70% and 79%; Red between 60% and 69%; and Grey as below 60%.

This analysis concluded that in using the playing field threshold of 80% or over as the overarching priority, and subject to proposals being made by the governing bodies of these schools, consultation should be undertaken on the expansion of Hungerford Primary Academy, Wistaston Academy and Monks Coppenhall Primary.

## Proposals to be considered:

### Hungerford Primary Academy

Situated close to the town centre, Hungerford Primary Academy was built in 1971. An infant block was later added in 1996, which allowed the school to increase to 2 forms of entry (420 places).

Hungerford Primary Academy is a successful school, achieving a “Good” category from Ofsted at the last inspection in April 2012. The school converted to an Academy in February 2015.

The school has a reception class admission limit of 60 pupils. The number of preferences received each year for places in the reception class is shown in the table below:

**Table 7 – Hungerford Academy Parent Preference Data**

Year of Entry	2013	2014	2015
First Preferences	69	62	55
Total Preferences	97	102	93

Hungerford currently has 16,520m<sup>2</sup> of playing field against BB103 recommendation of 14,350m<sup>2</sup>, equating to 94% of the recommended areas. If the school was to be considered for expansion by 1 form of entry (FE) then the building bulletin recommendation would be for 20,650m<sup>2</sup> of playing field, meaning that the schools provision would fall to 80% when the building has been taken into account.

### Wistaston Academy

Situated to the south west of Crewe town centre, Wistaston Academy was built in 1954. Originally operating as separate infant and junior schools the 2 schools were amalgamated in September 2005 to form Wistaston Green Nursery and Infant School. The school converted to Wistaston Academy in March 2014.

Wistaston Academy is a successful school, achieving an “Outstanding” category from Ofsted at the last inspection in September 2013.

The school has a reception class admission limit of 60 pupils. The number of preferences received each year for places in the reception class is shown in the table below:

**Table 8 – Wistaston Academy Parent Preference Data**

Year of Entry	2013	2014	2015
First Preferences	44	50	55
Total Preferences	62	91	101

Wistaston Academy currently has 19,637m<sup>2</sup> of playing field against BB103 recommendation of 14,350m<sup>2</sup>, equating to 132% of the recommended area. If the school was to be considered for expansion by 1FE then the building bulletin recommendation would be for 20,650m<sup>2</sup> of playing field, meaning that the school's provision would fall to 92% when the building has been taken into account.

## Monks Coppenhall Primary

Situated on the outskirts of Crewe town centre Monks Coppenhall Primary opened in 1953. Due to increased housing in the local area the school was extended in 1994 to a 2 form entry primary school (2FE).

Monks Coppenhall is a successful school, achieving an "Outstanding" category from Ofsted at the last inspection in February 2011. The school is in the process of converting to an Academy with implementation planned for 1 April 2016.

The school has a reception class admission limit of 60 pupils. The number of preferences received each year for places in the reception class is shown in the table below:

**Table 9 – Monks Coppenhall Parent Preference Data**

Year of Entry	2013	2014	2015
First Preferences	77	70	51
Total Preferences	116	124	81

Monks Coppenhall currently has 17,105m<sup>2</sup> of playing field against BB103 recommendation of 14,350m<sup>2</sup>, equating to 119% of the recommended areas. If the school was to be considered for expansion by 1FE then the building bulletin recommendation would be for 20,650m<sup>2</sup> of playing field, meaning that the school's provision would fall to 91% when the building had been taken into account.

## Other Options considered

At the School Organisation Strategy Group meeting of 21 May consideration was given to the potential for obtaining additional land in close proximity to existing schools, thus allowing for a school expansion that would otherwise fall below the recommended 80% playing field tolerance. Consideration was also given to the potential for a suitable site to facilitate the establishment of a new school.

The availability of land; both existing and linked to new housing development, was fully investigated. The outcome of this demonstrated that the only options that could potentially be progressed on this basis could be the expansion of Leighton Academy, to increase the school by 210 school places and a new school, for example a new faith Academy providing 210 places. These were supported by the group as viable options, subject to the Local Authority being able to secure additional land necessary, which was essential to the viability of both options.

### Leighton Academy

Situated to the north of the town centre, Leighton Academy was built in 1953 and was completely remodelled in 1994. Further refurbishment has taken place since and the school now operates as a 2 form of entry (FE) primary school with a separate building housing the nursery unit.

Leighton Primary Academy is a successful school having an “Outstanding” Ofsted classification in May 201.

The school has a reception class admission limit of 60 pupils. The number of preferences received each year for places in the reception class is shown in the table below:

**Table 10 – Leighton Academy Parent Preference Data**

Year of Entry	2013	2014	2015
First Preferences	94	117	114
Total Preferences	166	223	188

Due to a shortfall in capacity in Crewe in recent years, Leighton Academy has accommodated two bulge years facilitated by temporary ‘mobile’ classrooms. This was an interim solution provided by the Local Authority pending further investigation into the deliverability of a permanent expansion at the school. This has provided an additional 30 pupil places for 2014 and 2015 entry.

Whilst the expansion of Leighton Academy meets the criteria set by the Local Authority of being a popular and successful school, an assessment of the school has shown that permanent expansion cannot be achieved in the short term due to school site restrictions. Additional land is required to mitigate the impact on playing field space caused by a physical enlargement of the building and therefore this school does not provide a viable option for 2017. Further assessment will continue to assess its suitability for expansion in the future to mitigate the impact of new housing development in the area.

### New Faith School

The Diocese of Shrewsbury and the Diocese of Chester have expressed an interest through the Local Authority’s School Organisation Strategy Group in a new faith school in Crewe. However, the lack of availability of suitable land holdings in the area means that this option is not viable at this stage, but can inform discussions on any future need in Crewe.

## Crewe Reception Class Admissions

In response to a shortfall in pupil places in Crewe in recent years (2012-2015) 5 schools have already been expanded. This has provided an extra 42 reception class places and 294 places overall (reception to year 6). The 780 reception class places now available in the 14 Crewe primary schools is still low compared with the number of children resident in the combined catchment areas of the schools, as shown in the table below:

**Table 11 – Reception Data**

Year	Total Reception Places	Total Reception Aged Children
2012	738	836
2013	770	794
2014	770	896
2015	780	871

## Local Authority Funding for School Expansions

The proposed expansions, if approved, will be funded through basic need capital grant and section 106 contributions. Basic need funding is provided to local authorities to support their capital requirement for providing new pupil places by expanding existing maintained schools, free schools or academies, and by establishing new schools. Section 106 education funding contributions are those agreed with new housing developers specifically to fund the additional pupil places needed due to the new development.

Desktop analysis has been carried out to identify budget figures for the proposals. Full feasibility studies will be commissioned to identify more accurately the costs of implementation once a decision has been reached on which proposals to support post consultation. This detail will be included in the outline business case, which will be submitted for consideration and approval through the Council's internal financial approval process.

All Capital projects greater than £250,000 are subject to Cheshire East Council's Project Gateway process, which seek endorsement by way of review and challenge. This project has already started to proceed through this process.

In accordance with the Cheshire East Council's Constitution - Finance and Contract Procedure Rules, financial approval of this scheme will be sought at Cabinet as a fully funded supplementary capital estimate.

## Timescales

Consultation will run from 25 February 2016 to 25 March 2016. All feedback must be received between these dates.

## How to Comment on the Proposals

In partnership with the governing bodies/academy trusts of Hungerford Primary Academy, Wistaston Academy and Monks Coppenhall Primary School consultation is being co-ordinated by the Local Authority.

To submit your views on the proposals made by the governing bodies/academy trusts of these schools you can complete the Local Authority's electronic feedback form, which can be accessed on the Council's website at [www.cheshireeast.gov.uk](http://www.cheshireeast.gov.uk). Hard copies are available on request. Alternatively you can submit your feedback direct to the appropriate school:

Hungerford Primary Academy  
School Crescent  
Hungerford Road  
Crewe  
CW1 5HA  
[www.hungerford.cheshire.sch.uk](http://www.hungerford.cheshire.sch.uk)

Wistaston Academy  
Moreton Road  
Crewe  
CW2 8QS  
[www.wistastonacademytrust.co.uk](http://www.wistastonacademytrust.co.uk)

Monks Coppenhall Primary School  
Remer Street  
Crewe  
CW1 4LY  
[www.monkscoppenhall.cheshire.sch.uk](http://www.monkscoppenhall.cheshire.sch.uk)

## The Next Steps.....

Responses to this consultation will be collated for consideration by the governing bodies/academy trusts in partnership with the Local Authority. The Local Authority will consider all feedback received in order that a decision can be taken on whether to approve the funding of the proposed expansions. In the event that funding is approved; taking into account the feedback received and any additional information relevant to the proposal, the governing bodies will then consider the consultation feedback and the decision of the Local Authority to reach agreement about whether to progress their expansion proposal.

The implementation of an agreed expansion proposal would be subject to the necessary planning and Section 77 (School Standards and Framework Act 1998) approvals, as appropriate.



**Please Note:**

Individual queries received during the consultation period will not receive a direct response, but will be addressed in the consultation summary produced at the end of the process and published online for all interested parties.

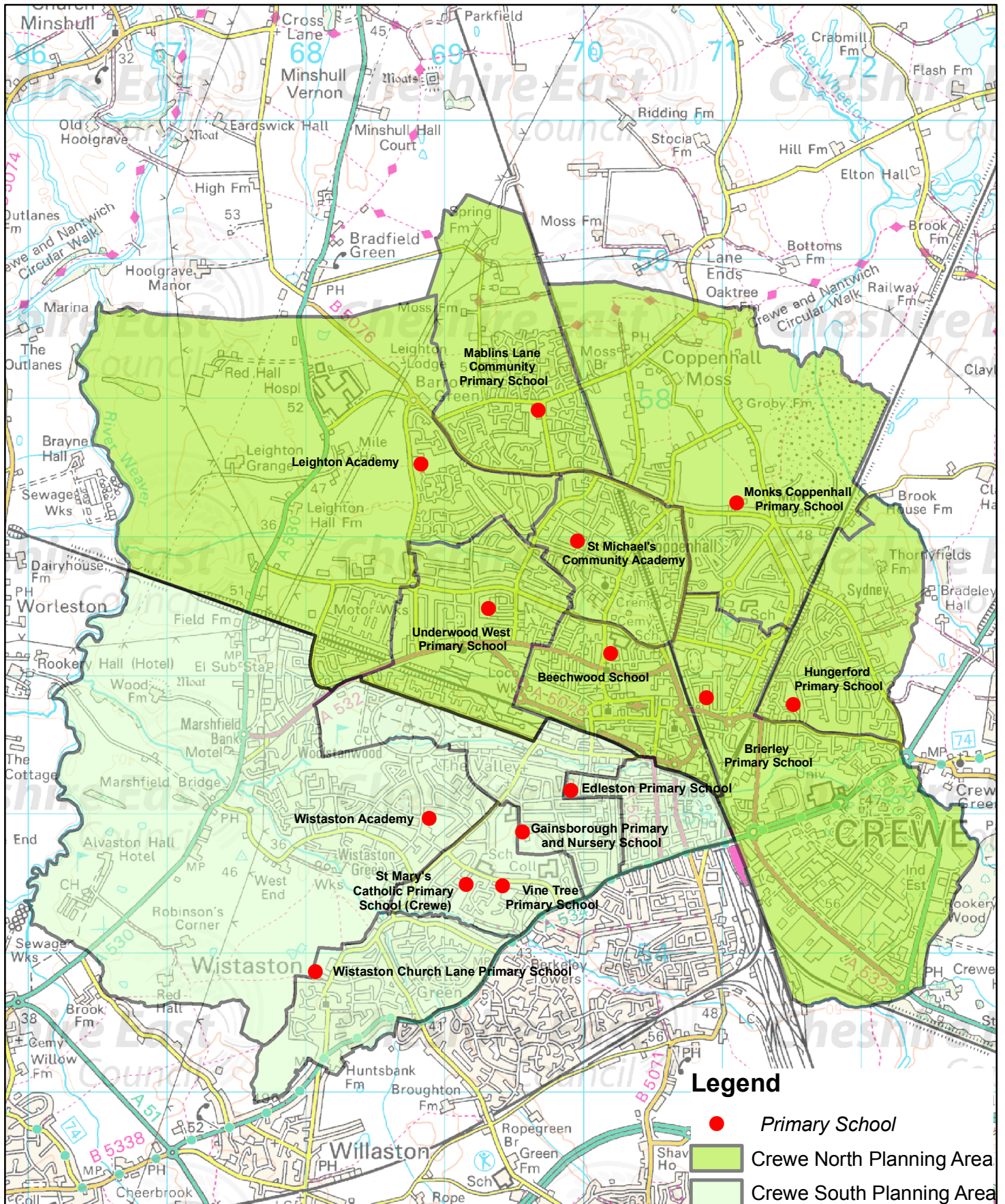
For further information, contact:

Cheshire East Borough Council, School Organisation and Capital Strategy Team,  
Floor 7, C/O Municipal Building, Earle Street, Crewe CW1 2BJ,  
e-mail: [SOCS@cheshireeast.gov.uk](mailto:SOCS@cheshireeast.gov.uk) Tel: 0300 123 5012

**This page is intentionally left blank**

Consultee	Organisation / School
Proposing School and Council's Web Pages	n/a
Proposing School Academy Trust/ Governing Body	Hungerford Primary Academy/ Monks Coppenhall Primary School/ Wistaston Academy/
Proposing School Staff	Hungerford Primary Academy/ Monks Coppenhall Primary School/ Wistaston Academy/
Proposing School Parents	Hungerford Primary Academy/ Monks Coppenhall Primary School/ Wistaston Academy/
Proposing School Pupils	Hungerford Primary Academy/ Monks Coppenhall Primary School/ Wistaston Academy
Governing bodies, Head teachers , staff and parents at Neighbouring Primary Schools	Mablins Lane
	Beechwood School
	Brierley Primary School
	Edleston Primary
	Gainsborough Primary And Nursery
	Leighton Academy
	St Mary's Catholic Primary
	St Michael's Community Academy
	Vine Tree Primary
Governing Bodies, Headteacher and staff at Neighbouring High Schools	Underwood West Primary School
	Wistaston Church Lane Primary
Governing Bodies, Headteacher and staff at Neighbouring High Schools	Sir William Stanier/ Ruskin/ Kings Grove/ St Thomas More RC / Shavington
Governing Bodies, Headteacher and staff at Shavington Primary SchoolsNeighbouring High Schools	Sir William Stanier/ Ruskin/ Kings Grove/ St Thomas More RC / Shavington
Governing Bodies, Headteacher and staff at Neighbouring High Schools	Shavington primary, pebble Brook, weston, the Berkeley, Wybunbury Delves
Diocesan Authorities	Diocese of Shrewsbury
	Diocese of Chester
MP(s) of the constituencies affected	Mr Edward Timpson
Councillors - Ward Members	Cllr Irene Faseyi - Crewe Central
	Cllr Suzanne Brookfield - Crewe East
	Cllr Clair Chapman - Crewe East
	Cllr David Newton - Crewe East
	Cllr Mo Grant - Crewe North
	Cllr Dorothy Flude - Crewe South
	Cllr Steven Hogben - Crewe South
	Cllr Damian Bailey - Crewe St Barnabas
	Cllr Jill Rhodes - Crewe West
	Cllr Brian Roberts - Crewe West
	Cllr John Hammond - Haslington
	Cllr David Marren - Haslington
	Cllr Derek Bebbington - Leighton
	Cllr Steven Edgar - Shavington
	Cllr Sarah Pochin - Willaston & Rope
	Cllr Margaret Simon - Wistaston
	Cllr Jacqueline Weatherill - Wistaston
Local District / Parish Councils	Crewe Town Council
	Crewe Green
	Haslington
	Minshall Vernon & District Parish Council
	Moston
	Rope
	Shavington cum Gresty
	Warmingham
	Weston & Basford
	Wistaston
UNIONS	NAHT - Cheshire Branch
	GMB - Neil Holden
	UNISON - Cheshire East branch
	NUT - Cheshire East branch

**This page is intentionally left blank**



**This page is intentionally left blank**





The map displays the Crewe area and its surroundings, including Wistaston, Willaston, and Haslington. It highlights various housing developments and strategic local plan sites. The legend indicates the following categories:

- Schools
- Approved Housing Developments
- Undecided Housing Developments
- ◆ Developments under Appeal
- Strategic Local Plan Sites

The map shows several large yellow areas (Strategic Local Plan Sites) and blue areas (Approved Housing Developments) scattered across the region. Red dots indicate the locations of schools. The map also shows major roads and the River Weaver.

**This page is intentionally left blank**